

**LAVORI DI MANUTENZIONE STRAORDINARIA DI NATURA IMPIANTISTICA DEGLI IMMOBILI FACENTI PARTE A QUALUNQUE TITOLO DEL PATRIMONIO DELL'AZIENDA ULSS 8 BERICA E RELATIVE PERTINENZE CON ESCLUSIONE DEL PRESIDIO OSPEDALIERO SPOKE DI MONTECCHIO****PLANIMETRIE EDIFICI E PERTINENZE INTERESSATI**

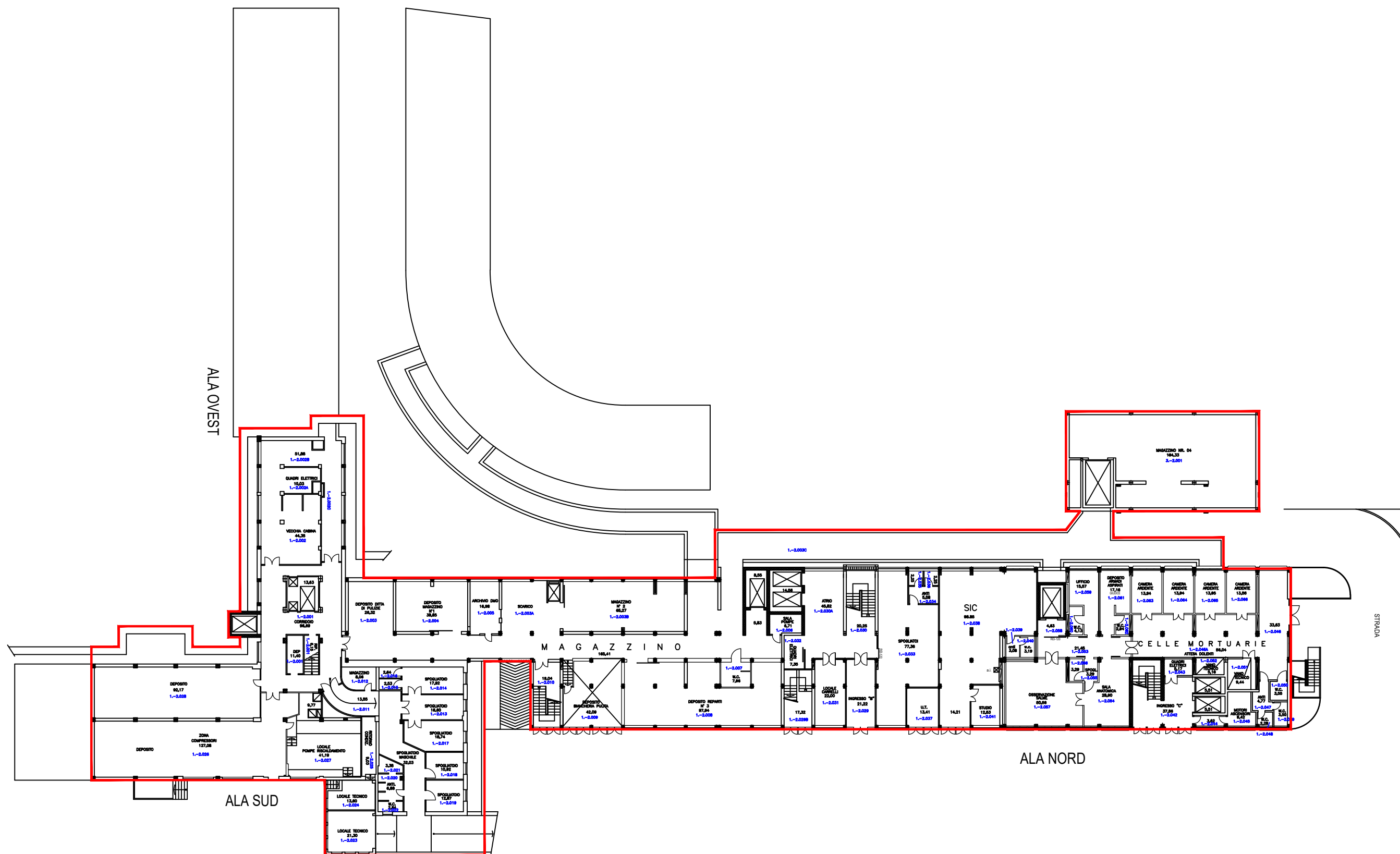
NOME FILE	REV.	DATA	MOTIVO EMISSIONE:	REDAZ.	VERIF.	APPROV.
6471-3_A.E.5.15#Planimetrie	-	-	-	-	-	-

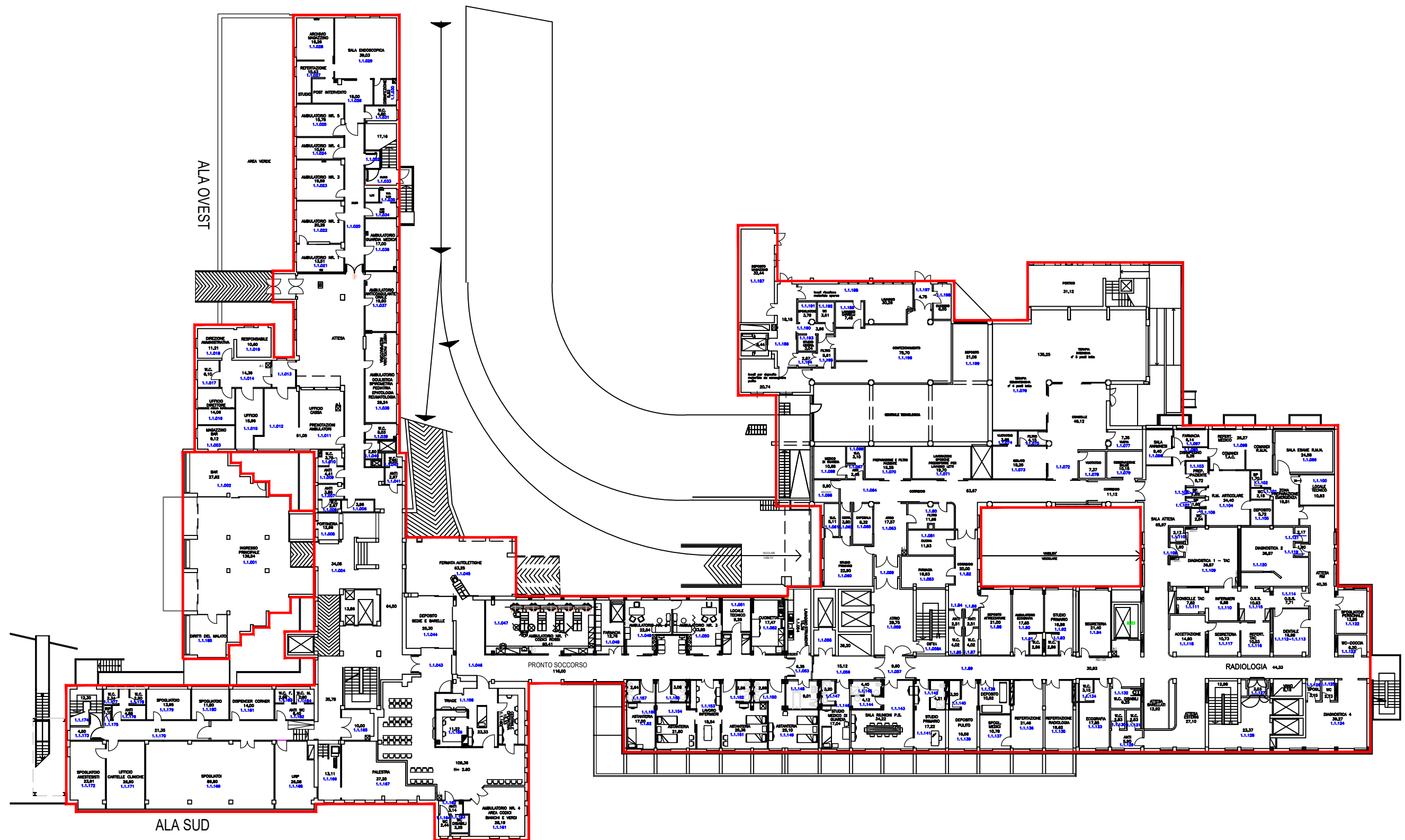
Progettista:

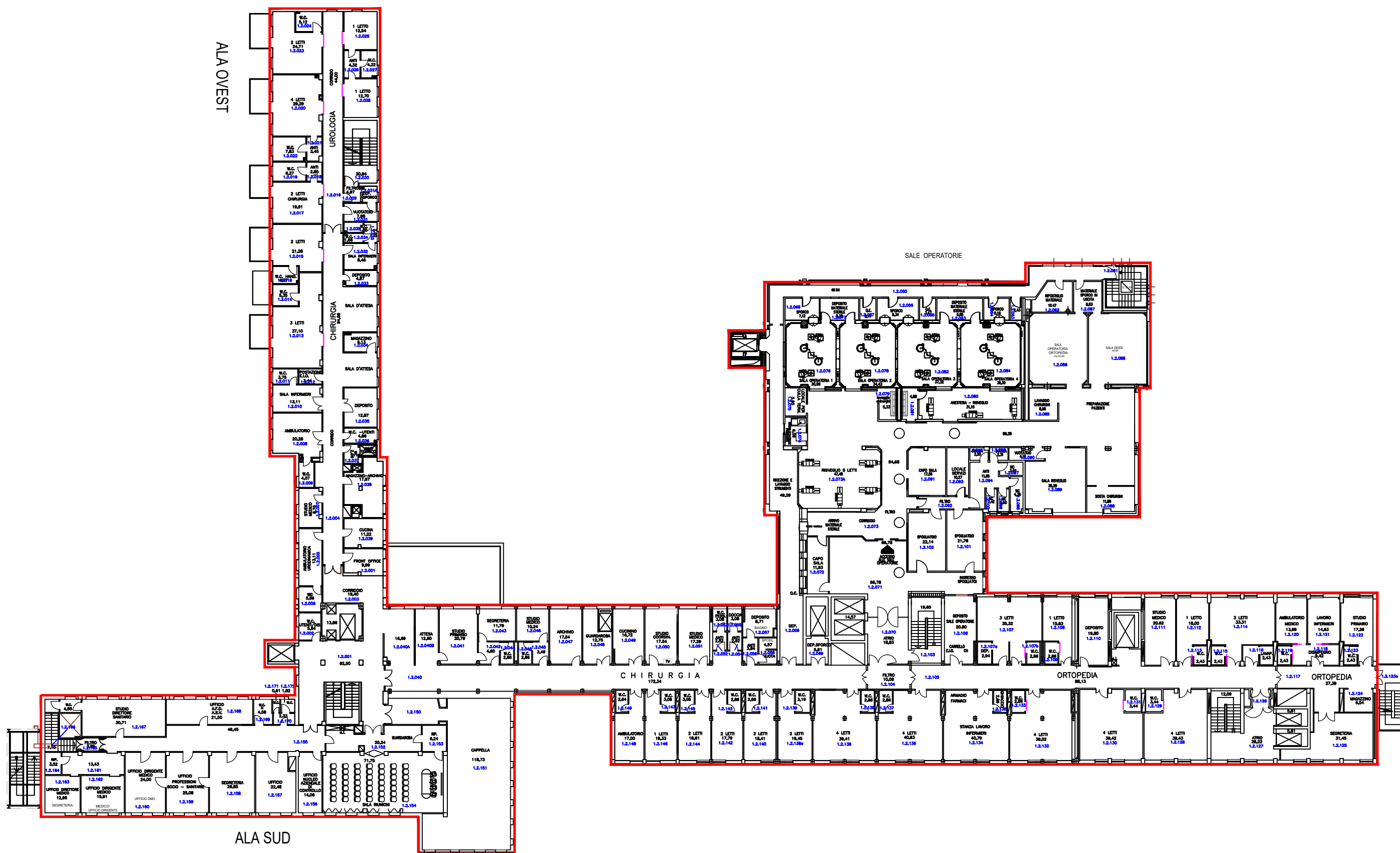
Arch. Gianfranco Arieti

Direttore generale:Dott.ssa Maria Giuseppina Bonavina
sede viale F. Rodolfi 37 - Vicenza -**Il RUP:**Ing. Filippo Paccanaro
Responsabile UOC
Servizi Tecnici e Patrimoniali
sede via Trento 4 - Arzignano (VI) -**Data:** Maggio 2023

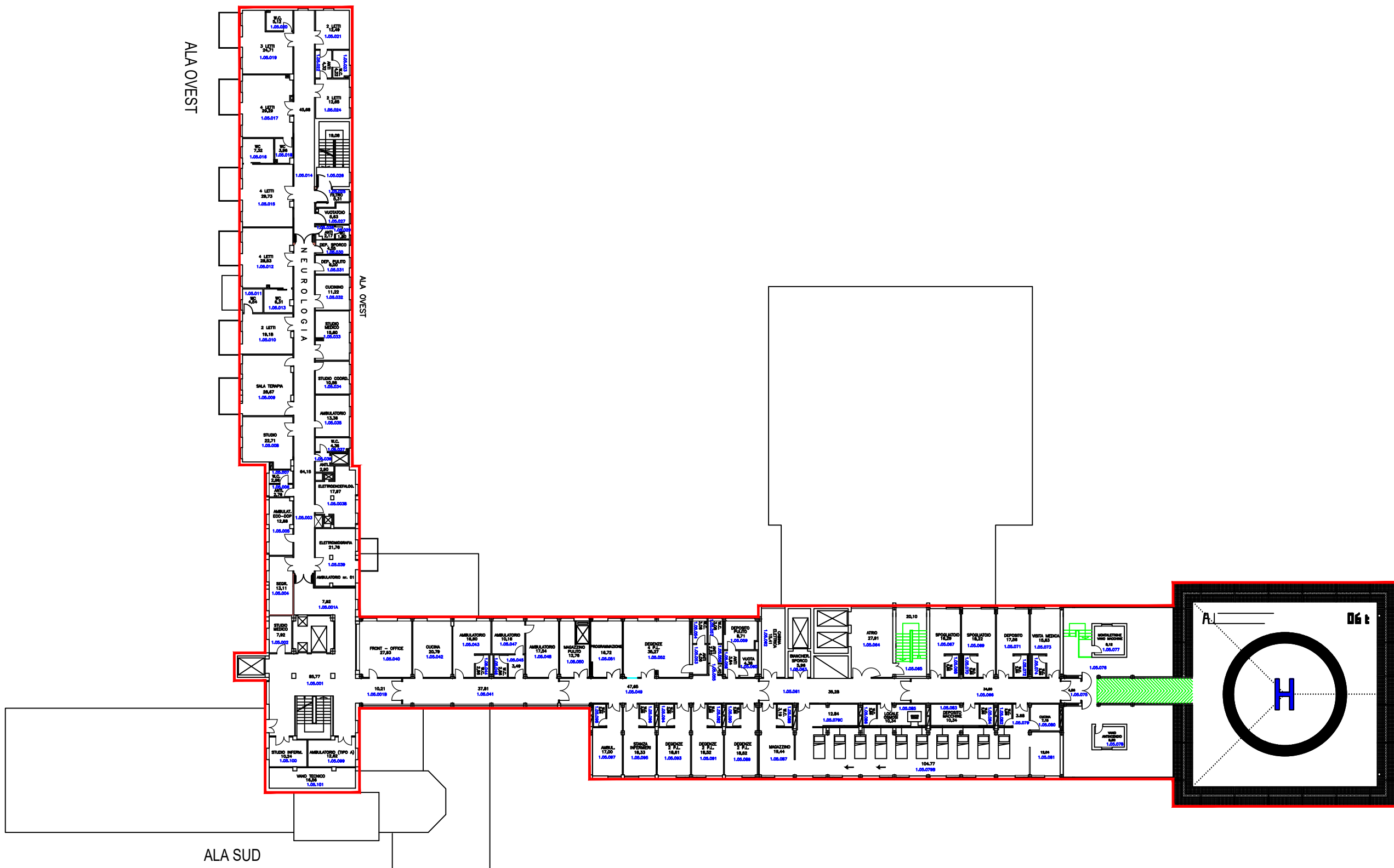
OSPEDALE DI ARZIGNANO (VI)

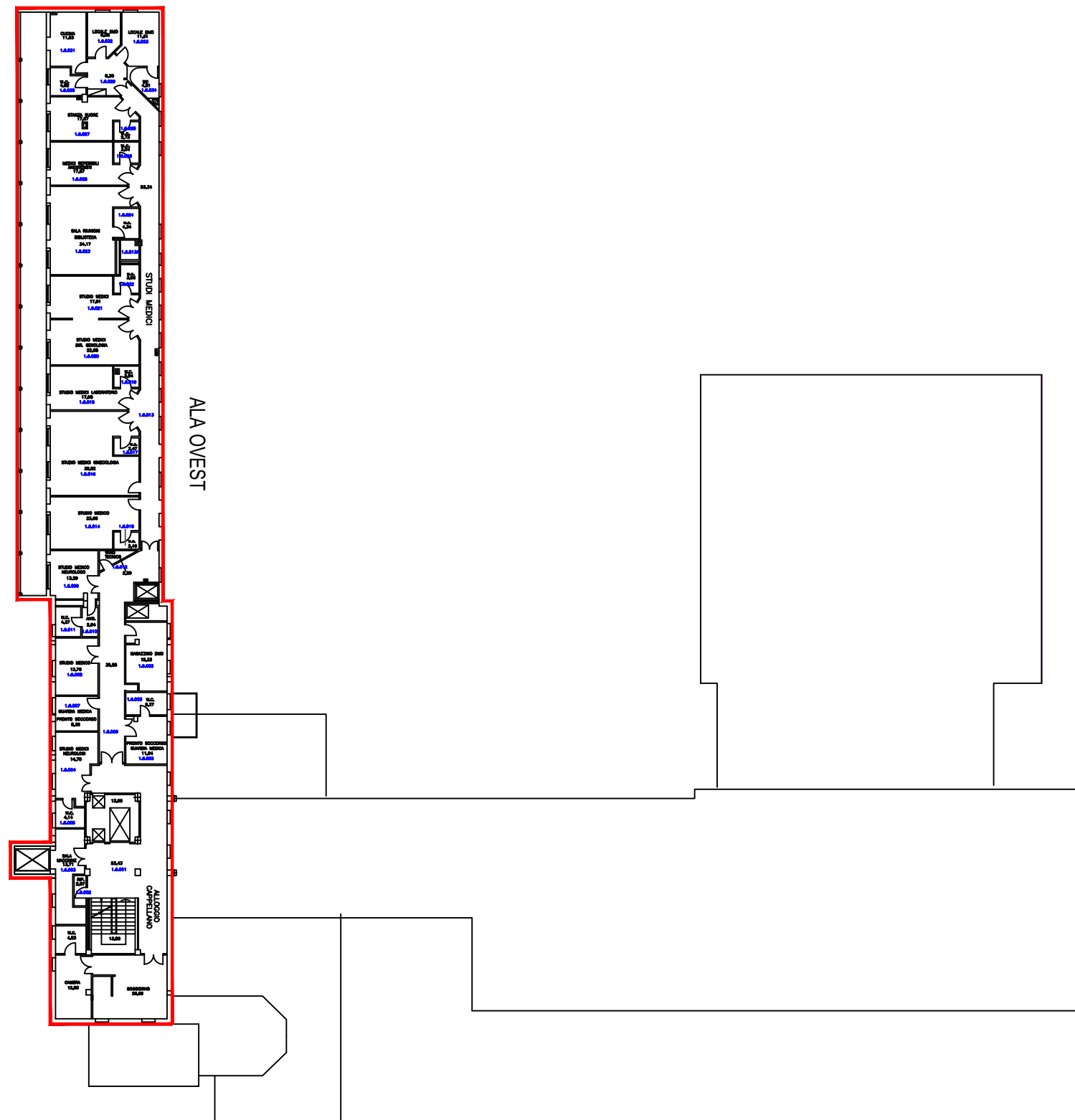












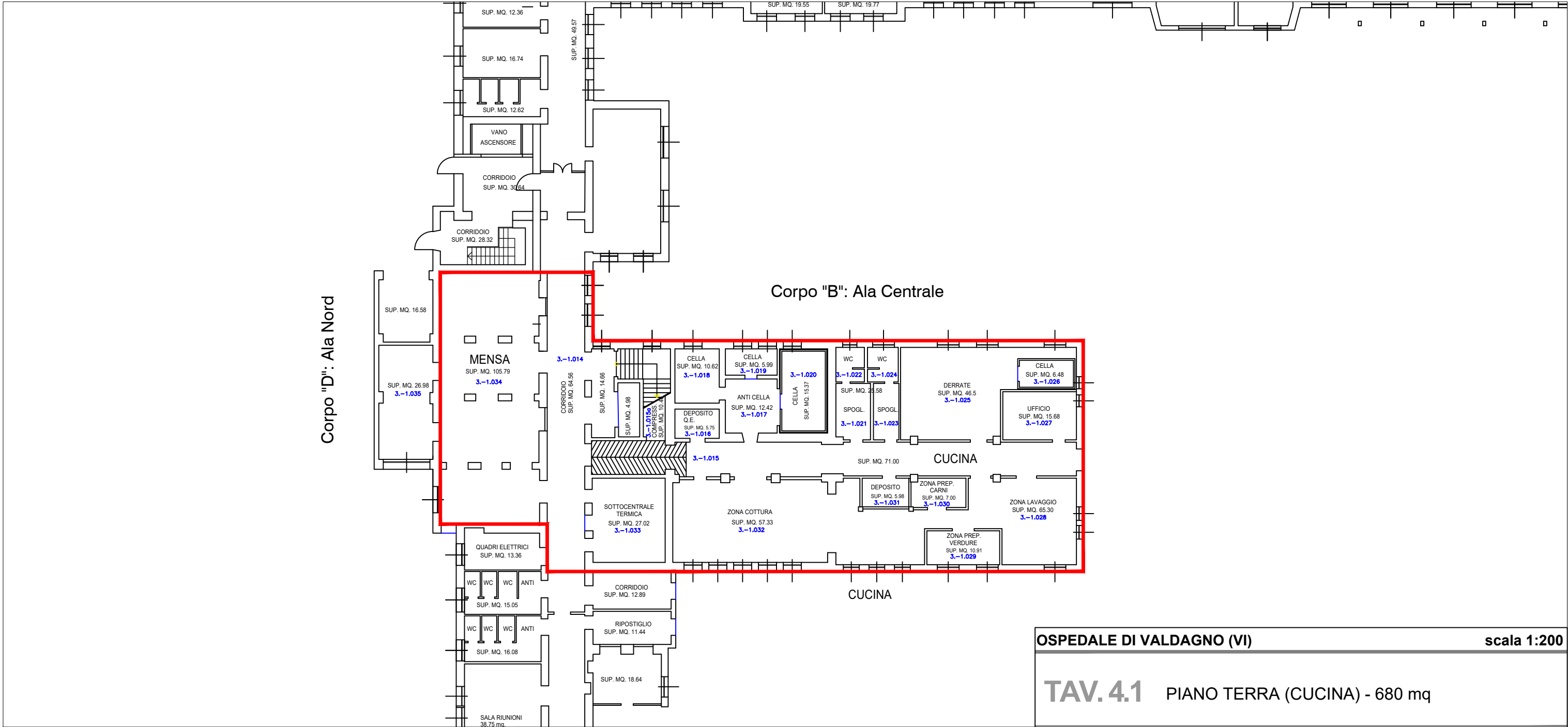
OSPEDALE DI VALDAGNO (VI)



OSPEDALE DI VALDAGNO (VI)

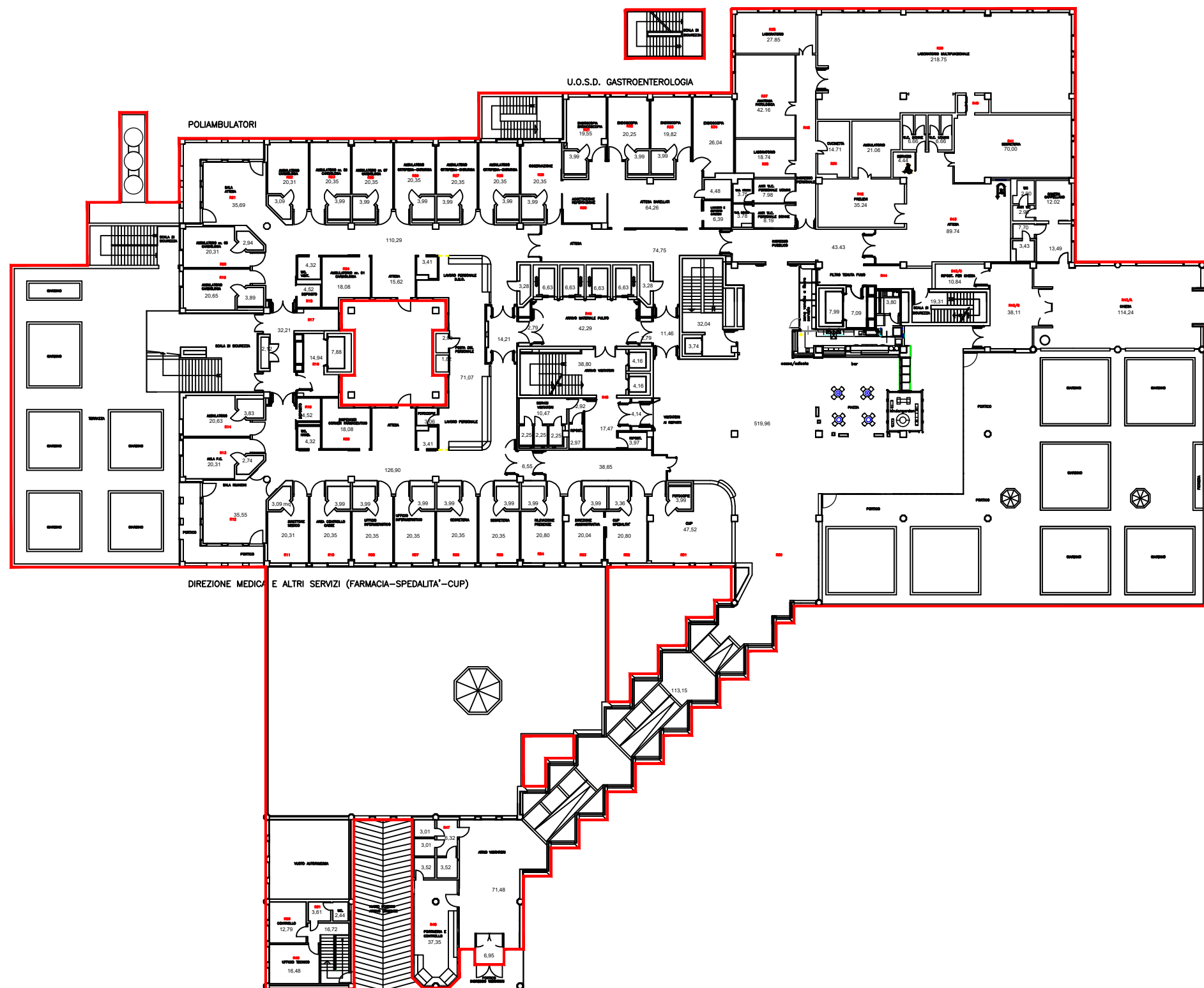
scala 1:200

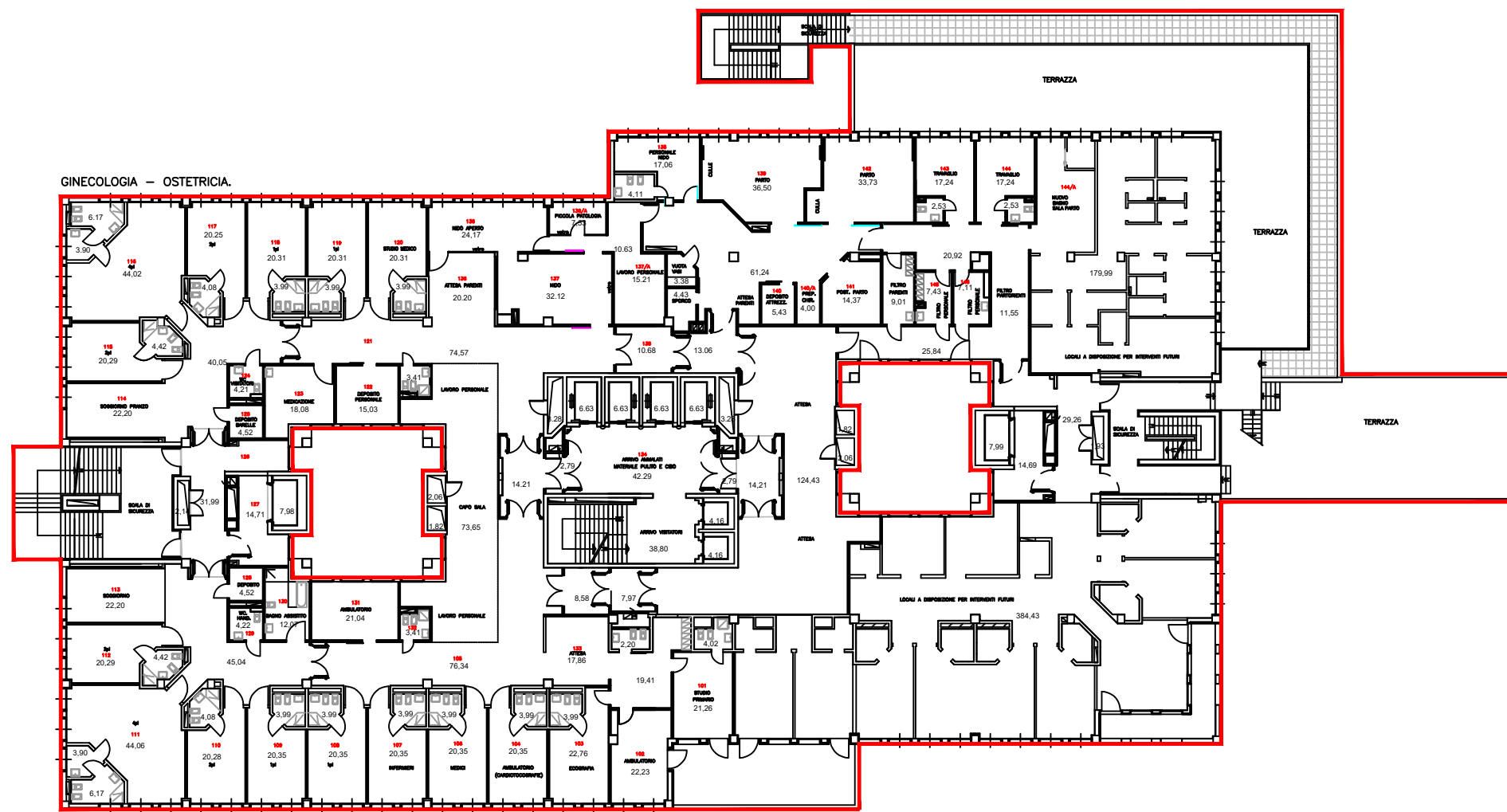
TAV. 4.1 PIANO TERRA (CELLE MORTUARIE) - 434 mq

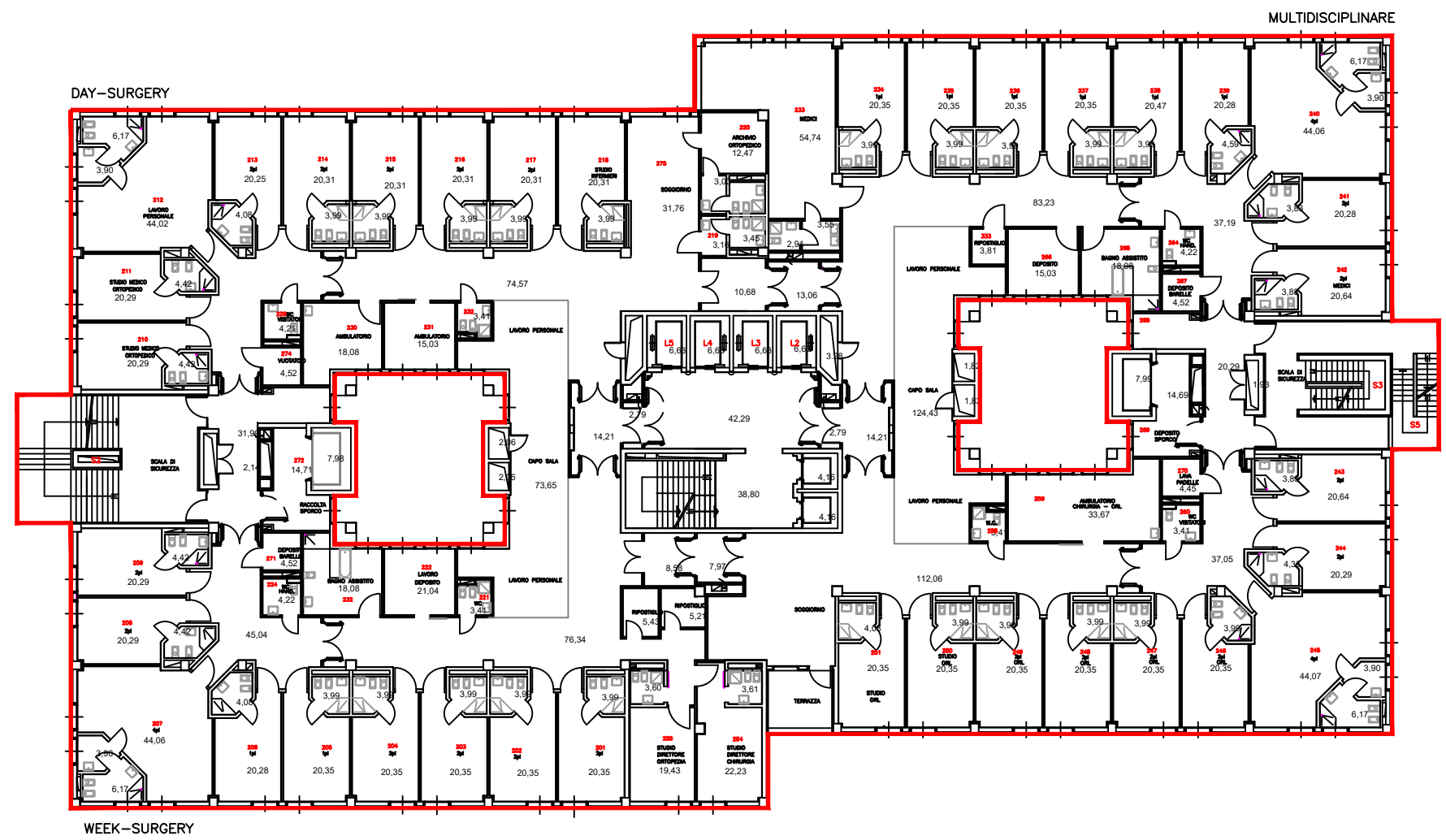


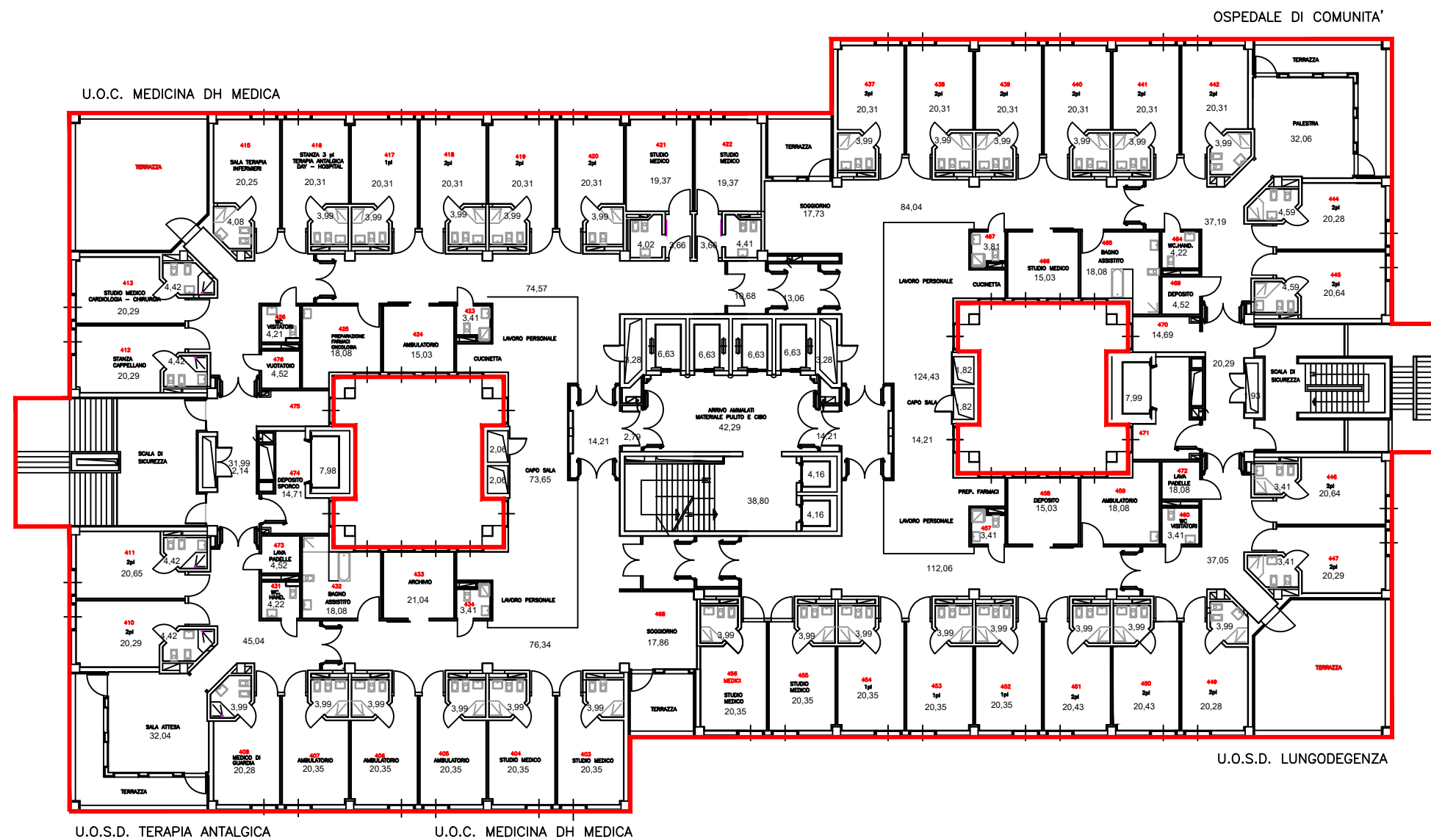
OSPEDALE DI VALDAGNO (VI) scala 1:200

TAV. 4.1 PIANO TERRA (CUCINA) - 680 mq





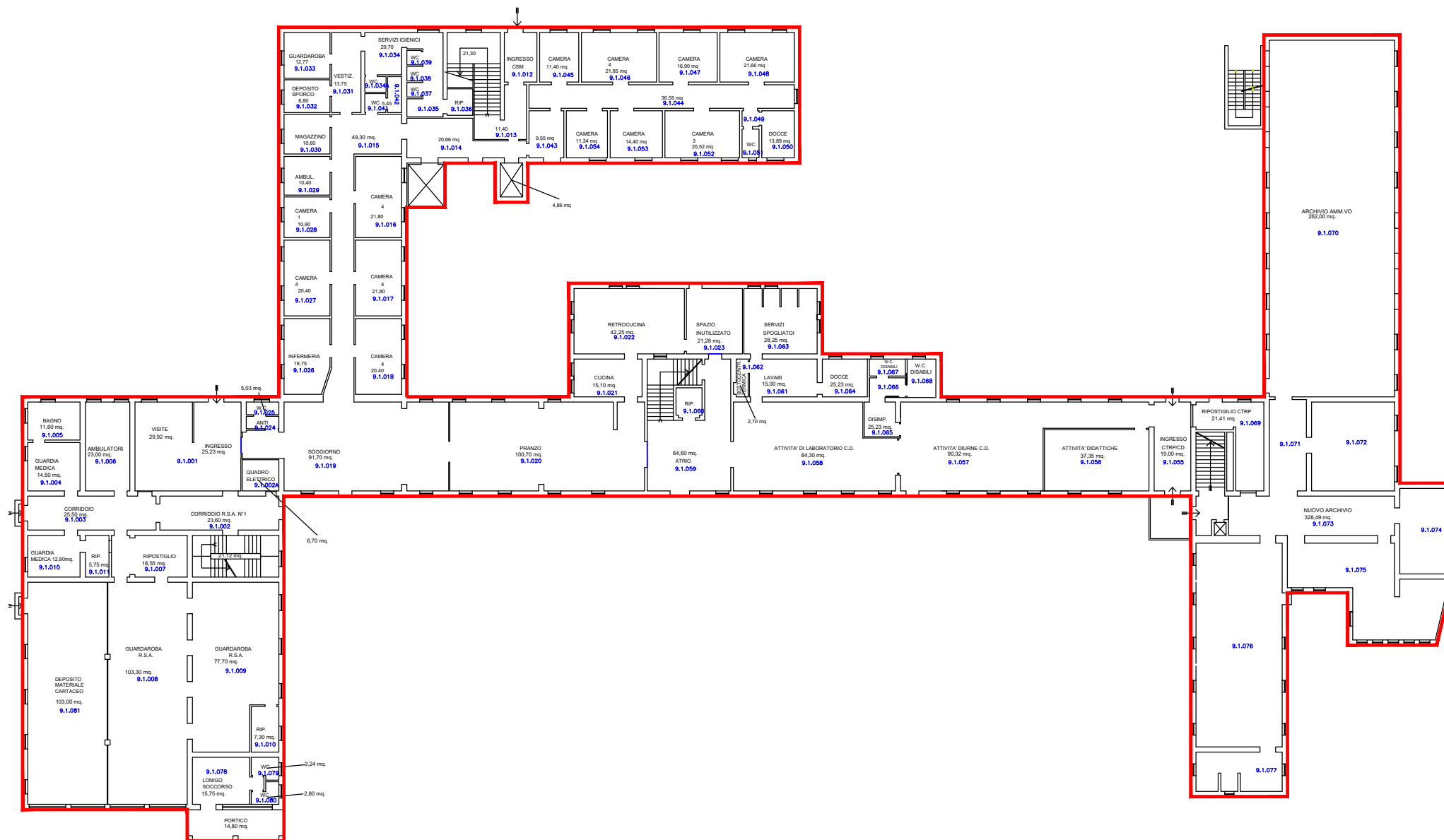




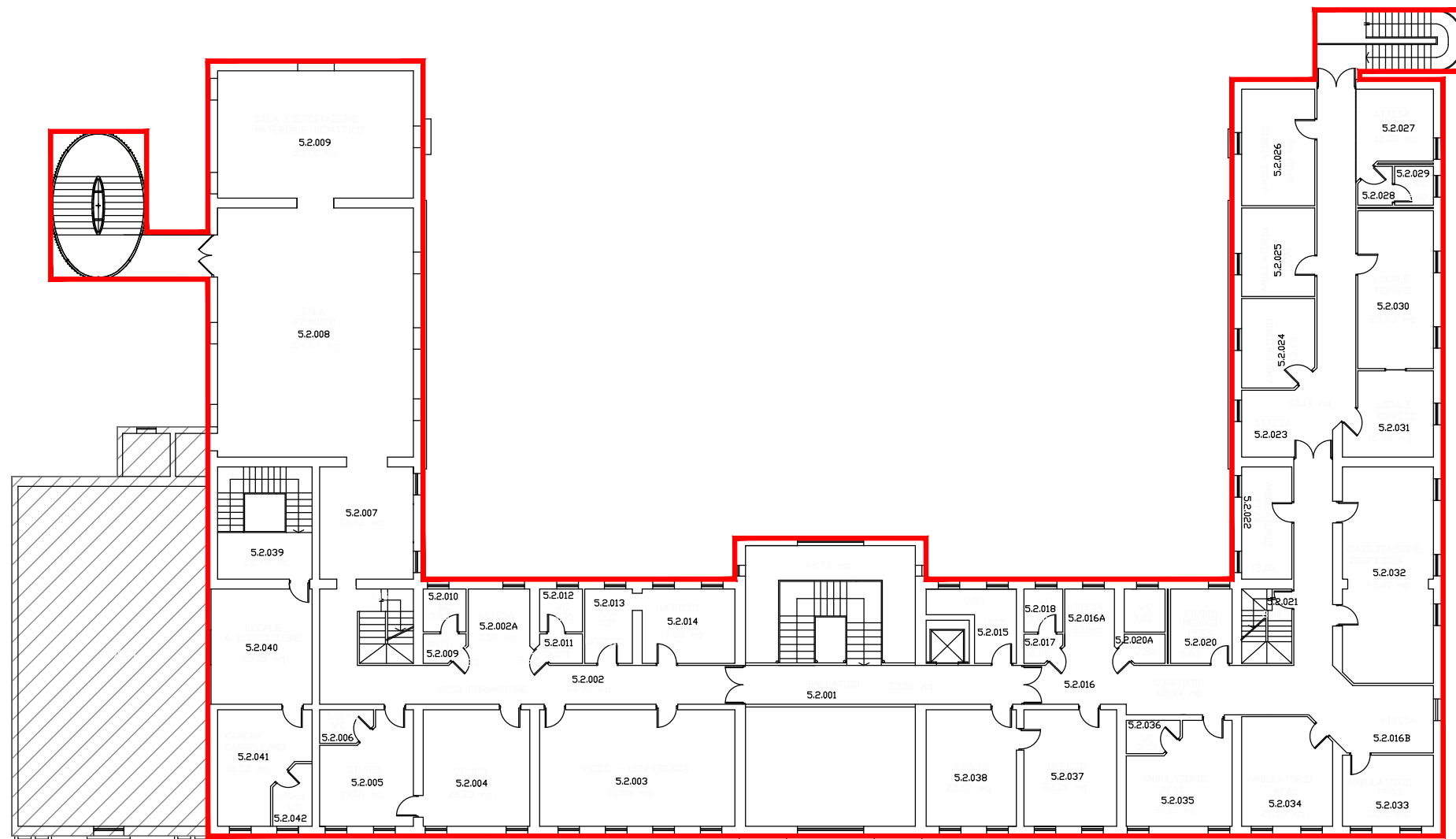
OSPEDALE DI VALDAGNO (VI) scala 1:200

TAV. 4.6 PIANO QUARTO - 2.797 mq

SEDE DI LONIGO (VI) – VIA SISANA, 1

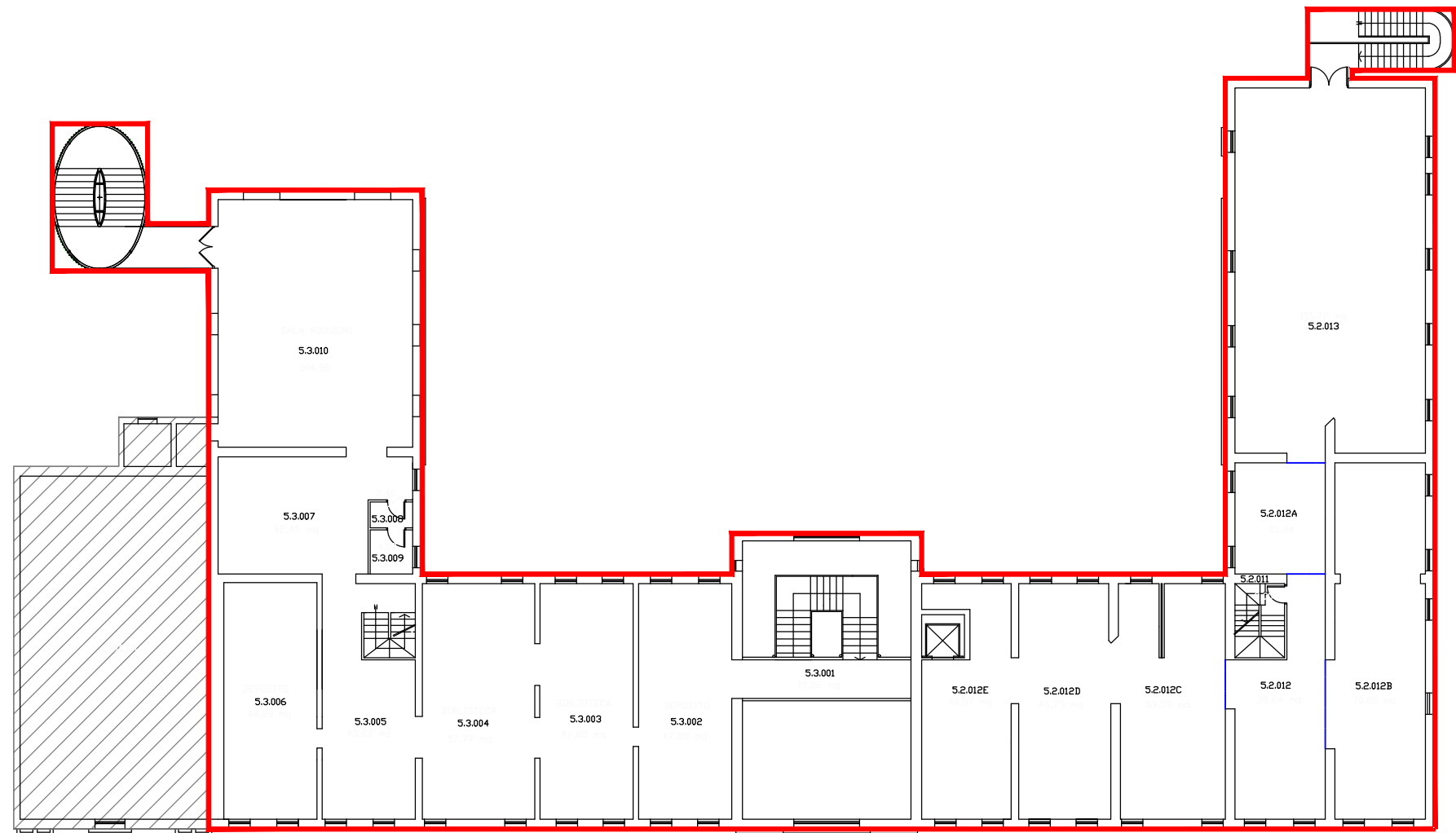


SEDE DI LONIGO (VI) – P.ZZA MARTIRI DELLA LIBERTA'



SEDE DI LONIGO (VI) - P.ZZA MARTIRI DELLA LIBERTA', 9. scala 1:200

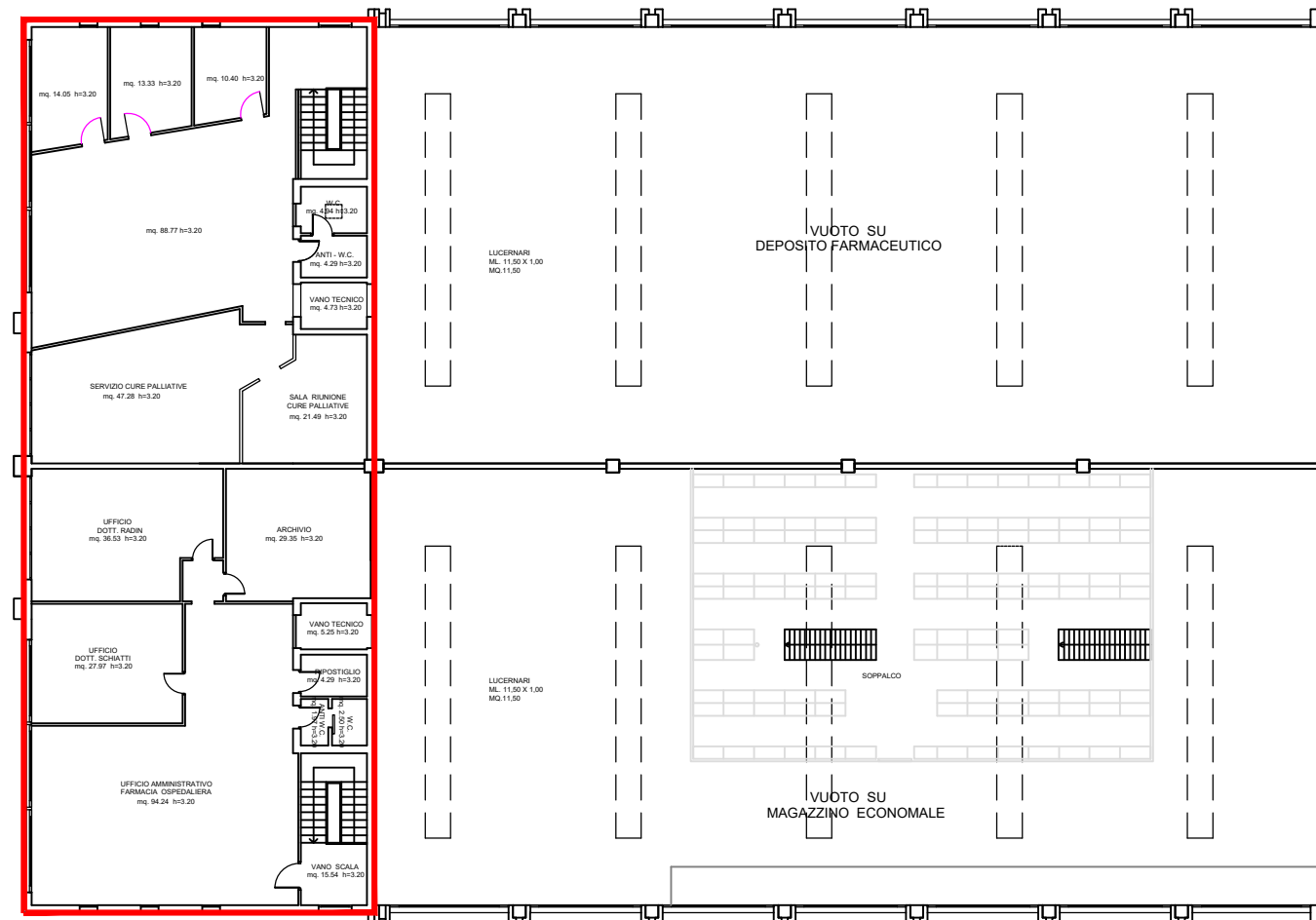
TAV. 6.1 PIANO PRIMO - 1.221 mq



SEDE DI LONIGO (VI) - P.ZZA MARTIRI DELLA LIBERTA', 9. scala 1:200

TAV. 6.2 PIANO SECONDO - 1.161 mq

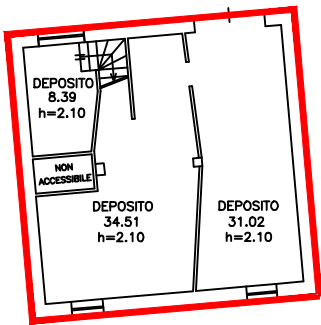
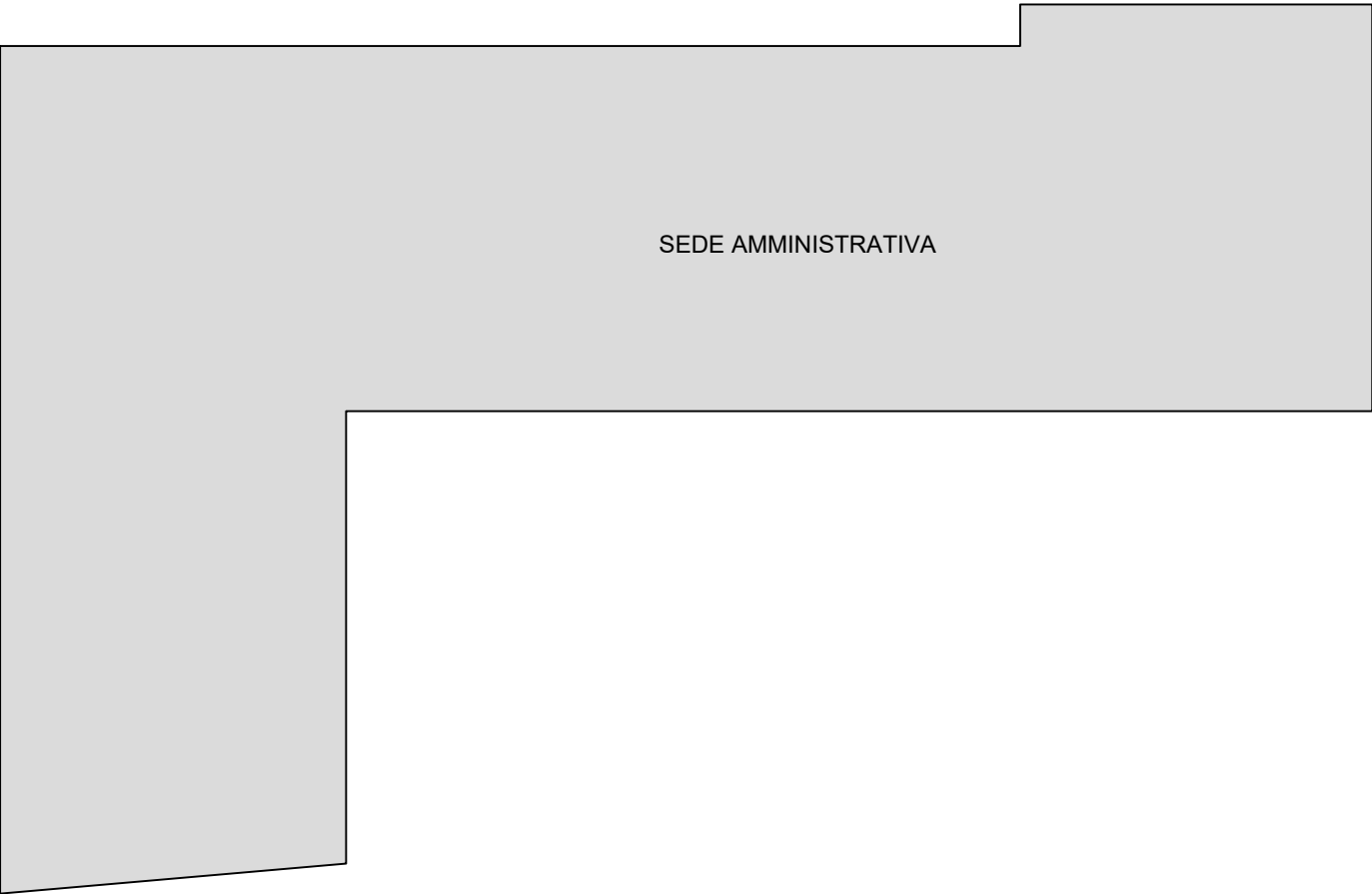
SEDE DI ARZIGNANO (VI) – V.LE DELL' INDUSTRIA, 107



SEDE DI ARZIGNANO (VI) - VIALE DELL' INDUSTRIA, 107. scala 1:200

TAV. 7.1 PIANO PRIMO - 485 mq

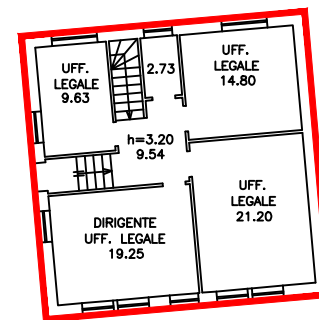
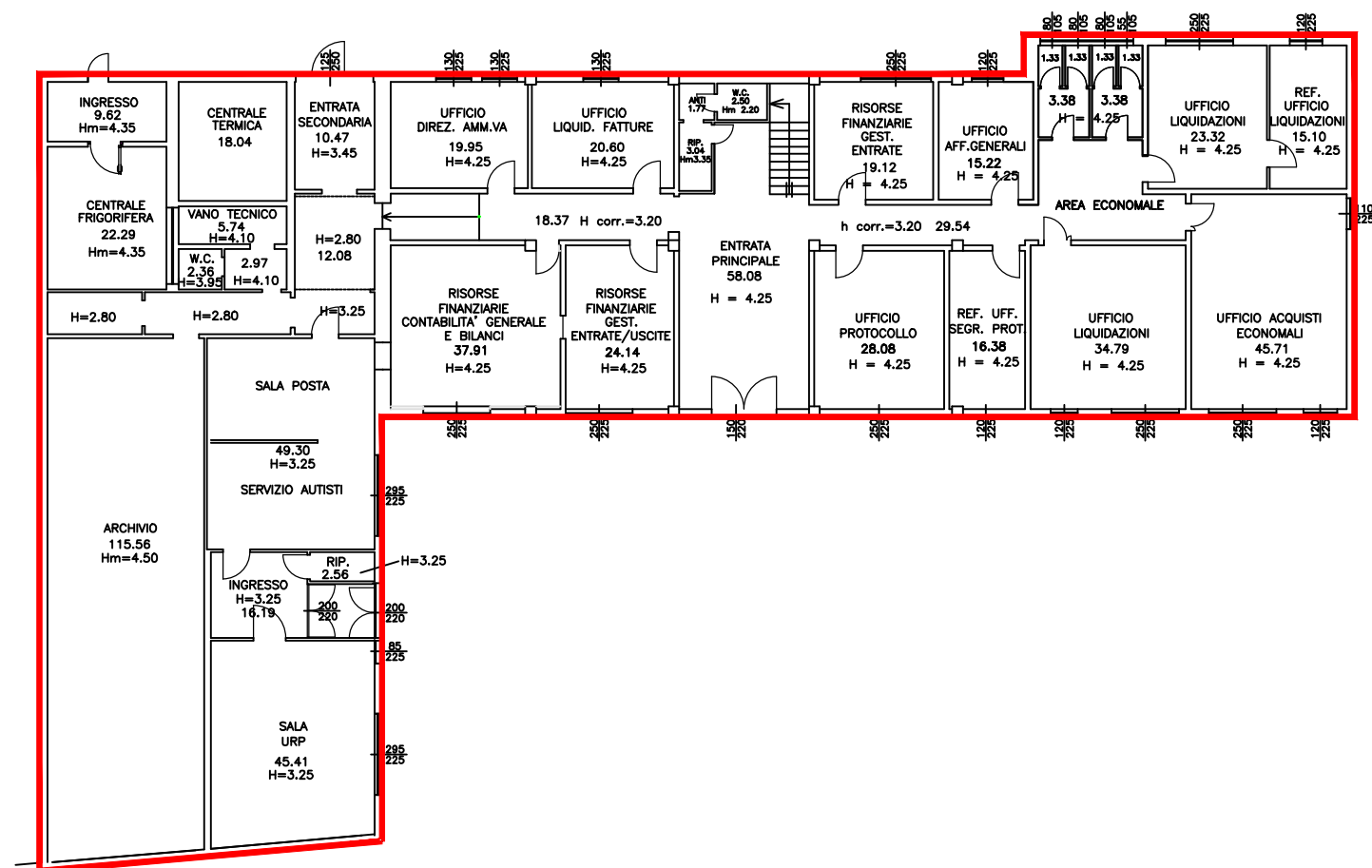
SEDE DI ARZIGNANO (VI) – VIA TRENTO, 4



SEDE DI ARZIGNANO (VI) - VIA TRENTO, 4.

scala 1:200

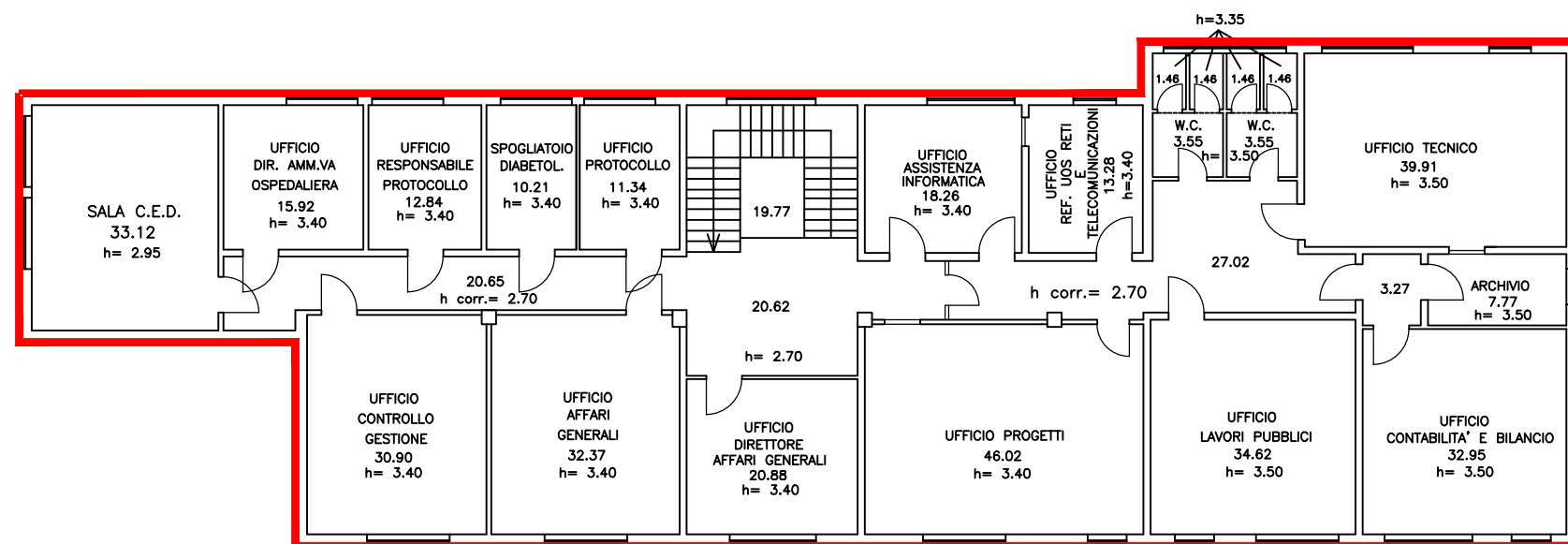
TAV. 8.0 PIANO INTERRATO - 100 mq



SEDE DI ARZIGNANO (VI) - VIA TRENTO, 4.

scala 1:200

TAV. 8.1 PIANO TERRA - 942 mq

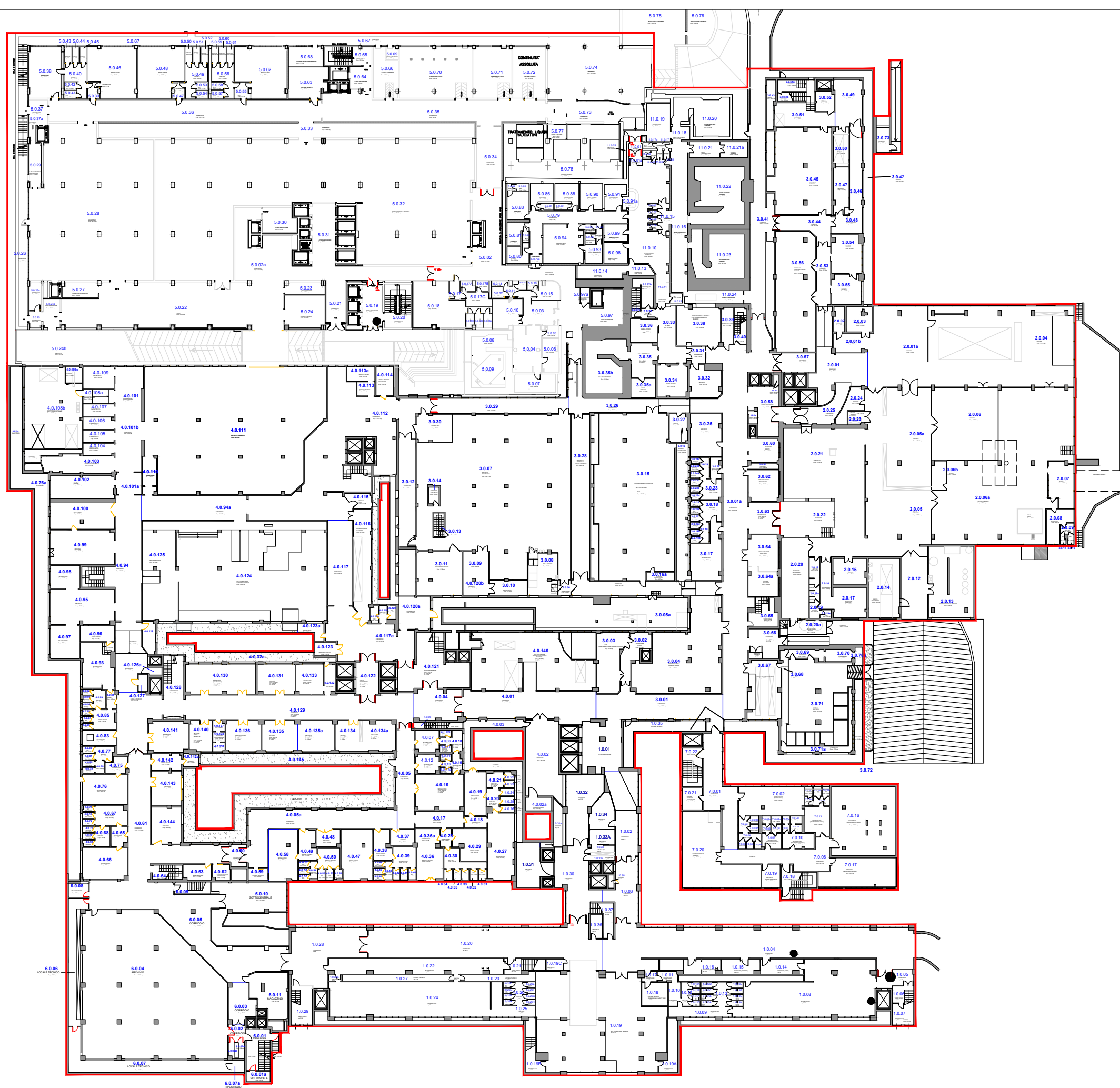


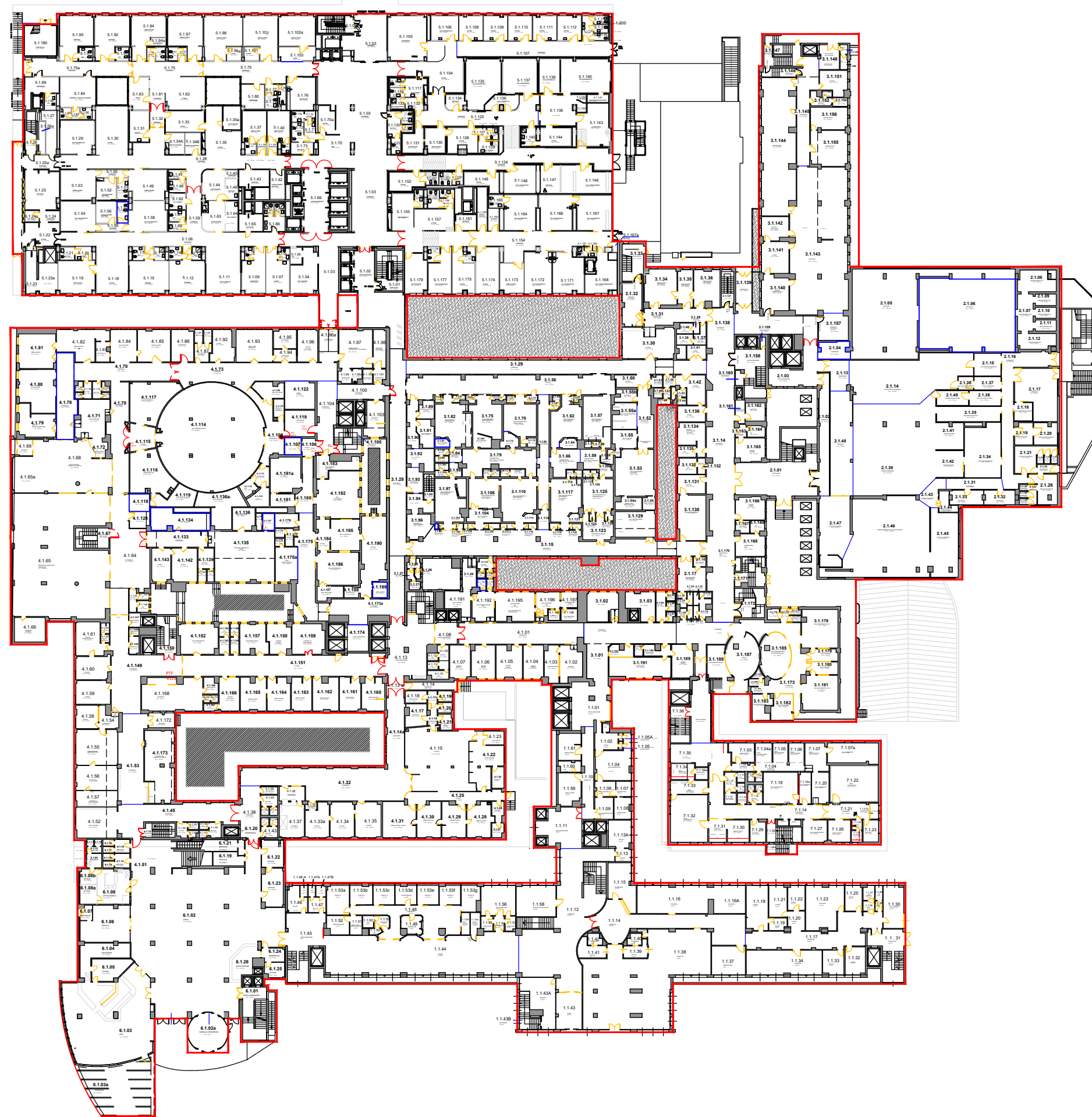
SEDE DI ARZIGNANO (VI) - VIA TRENTO, 4.

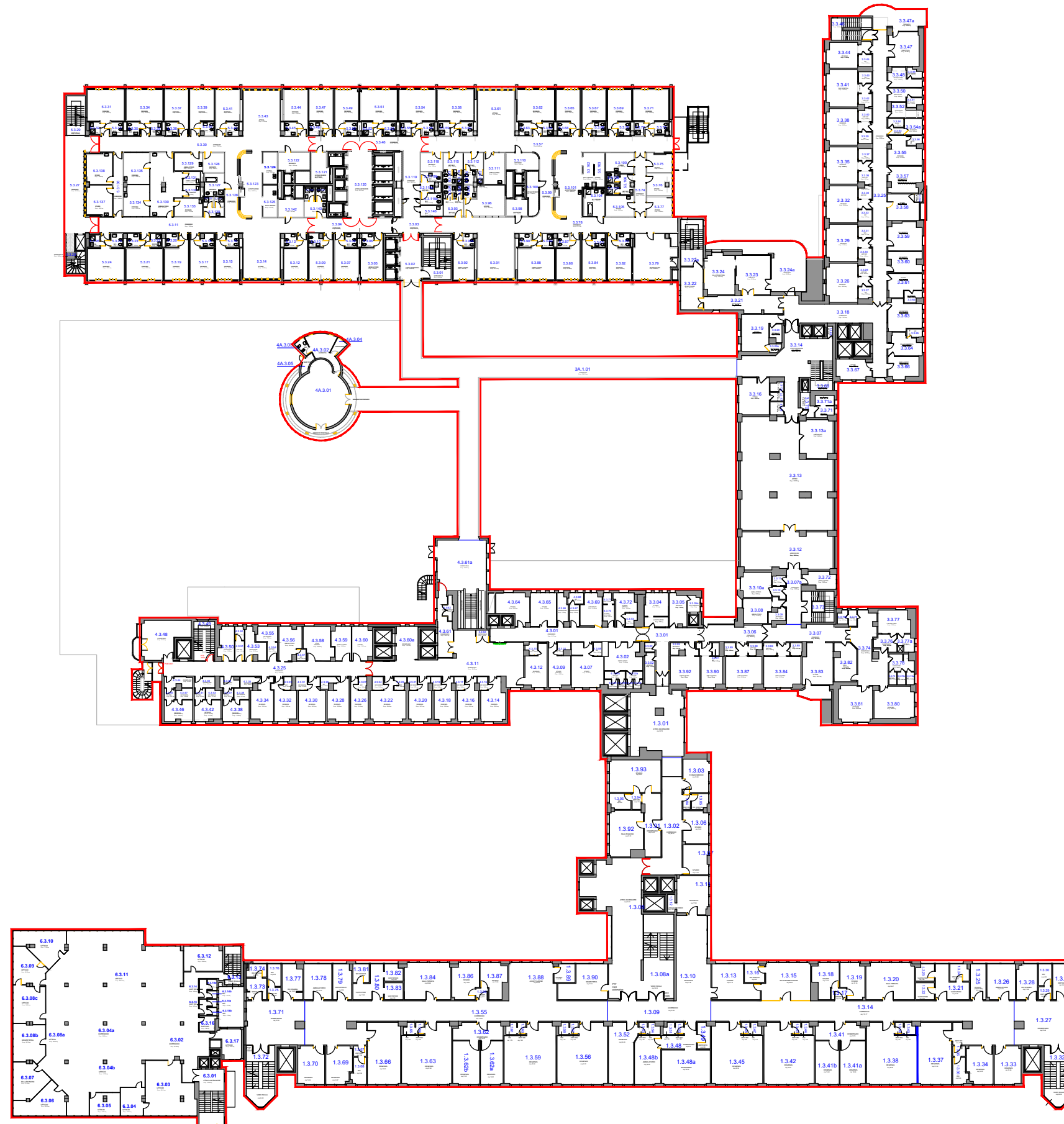
scala 1:200

TAV. 8.2 PIANO PRIMO - 529 mq

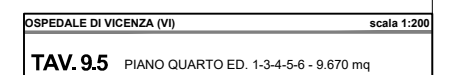
OSPEDALE DI VICENZA (VI)

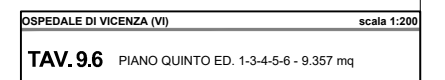


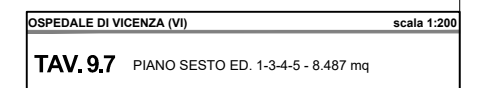


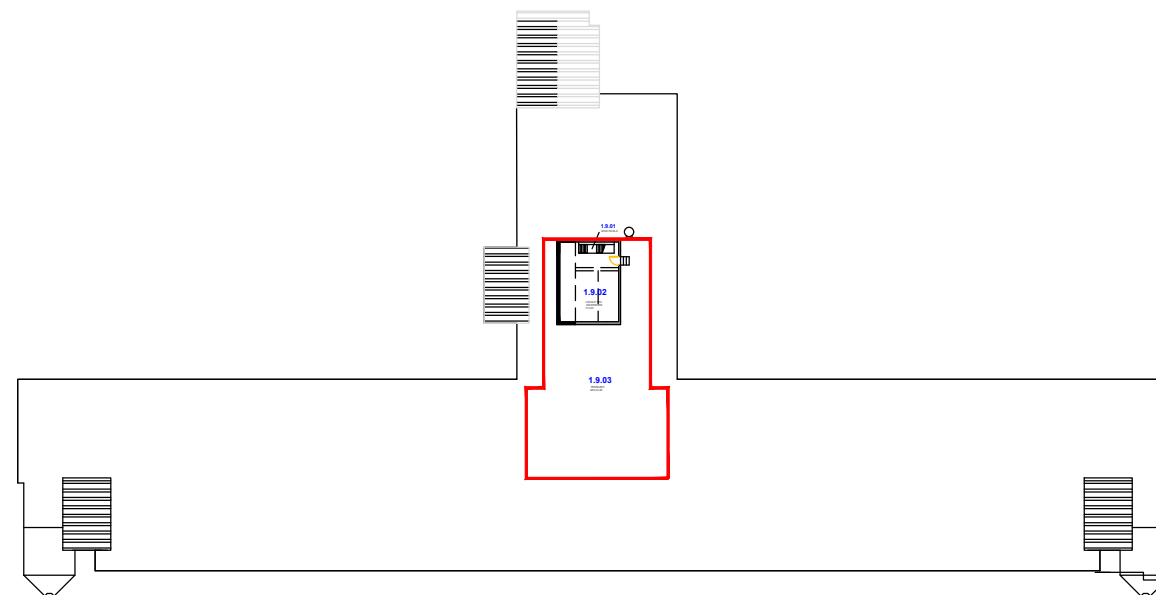
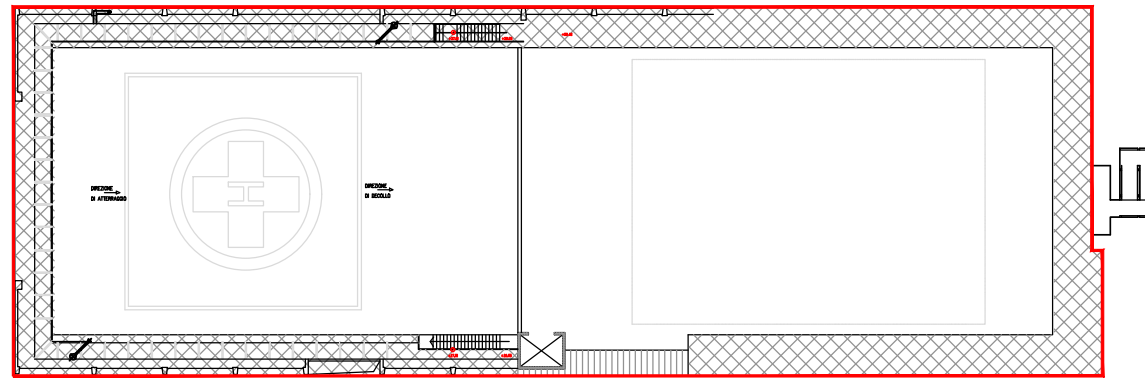


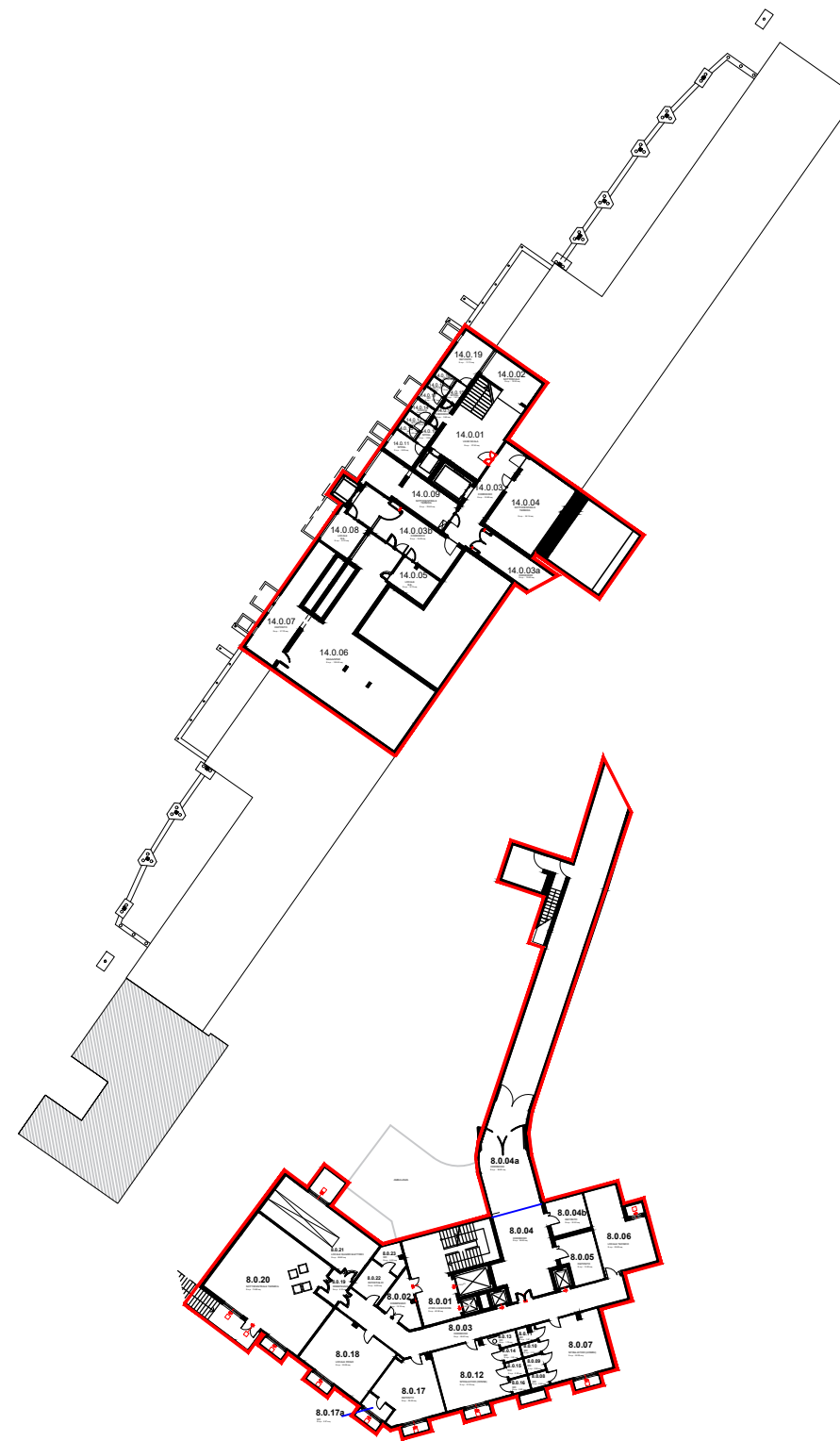


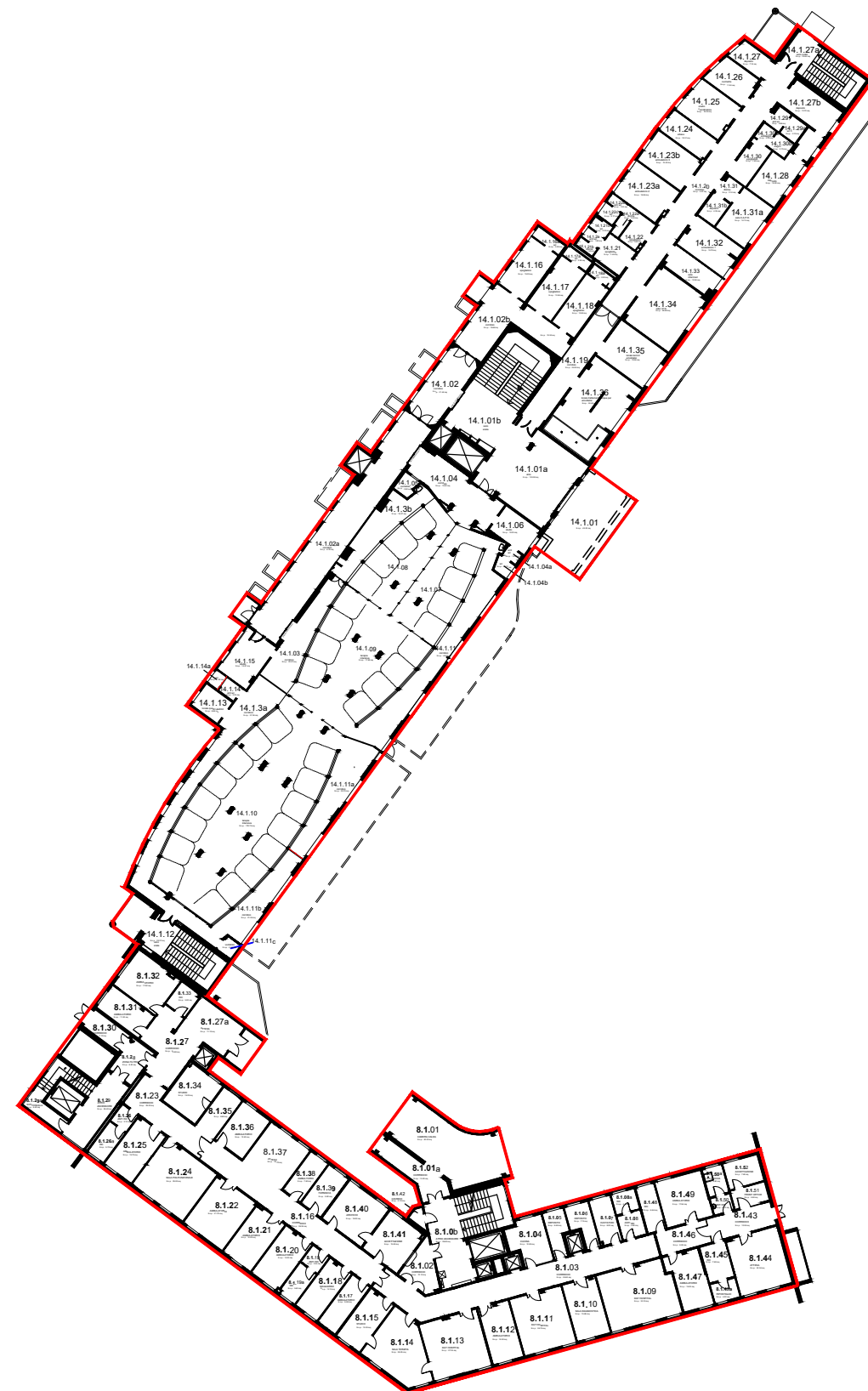


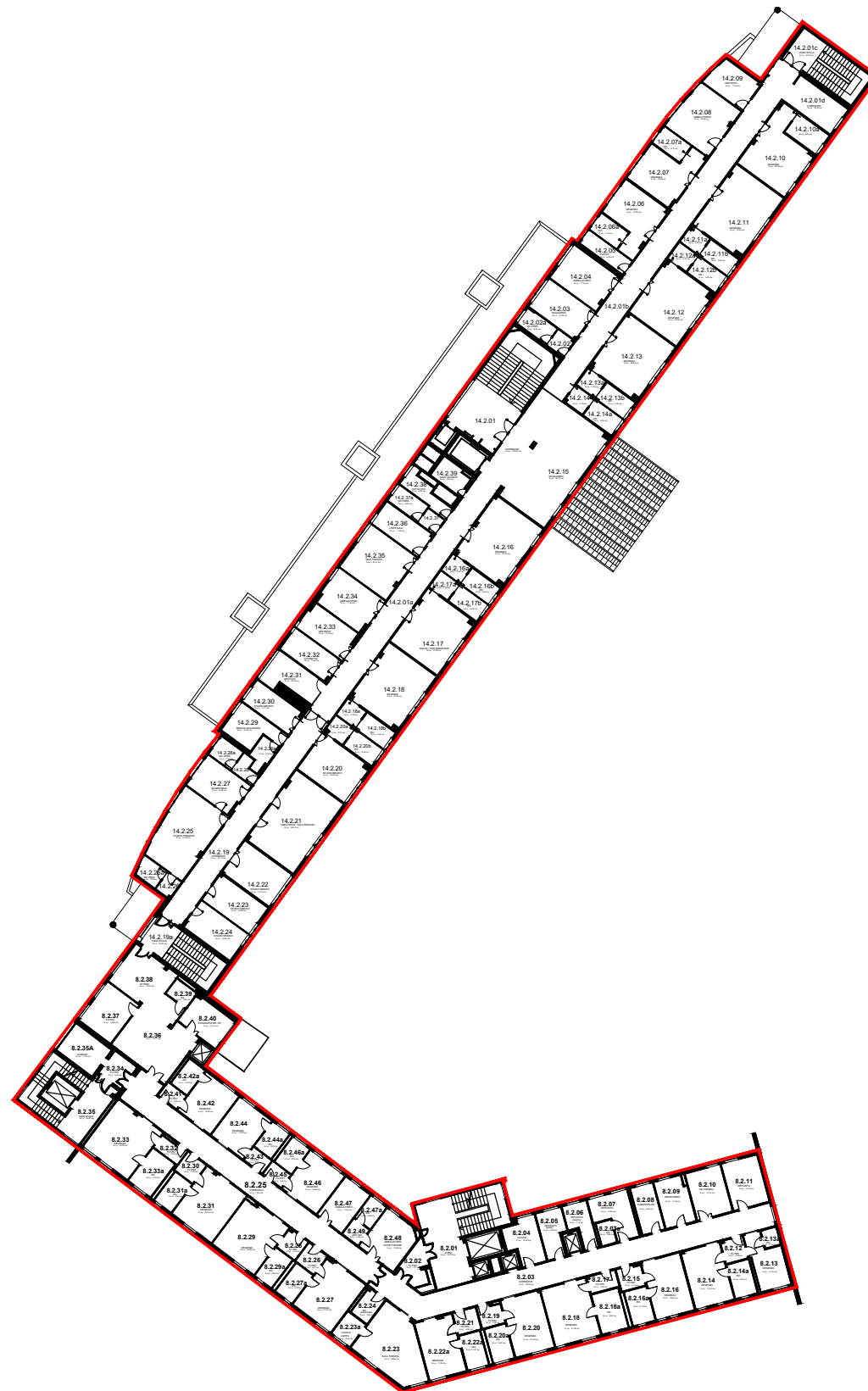


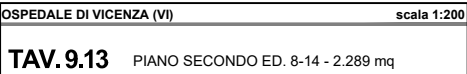


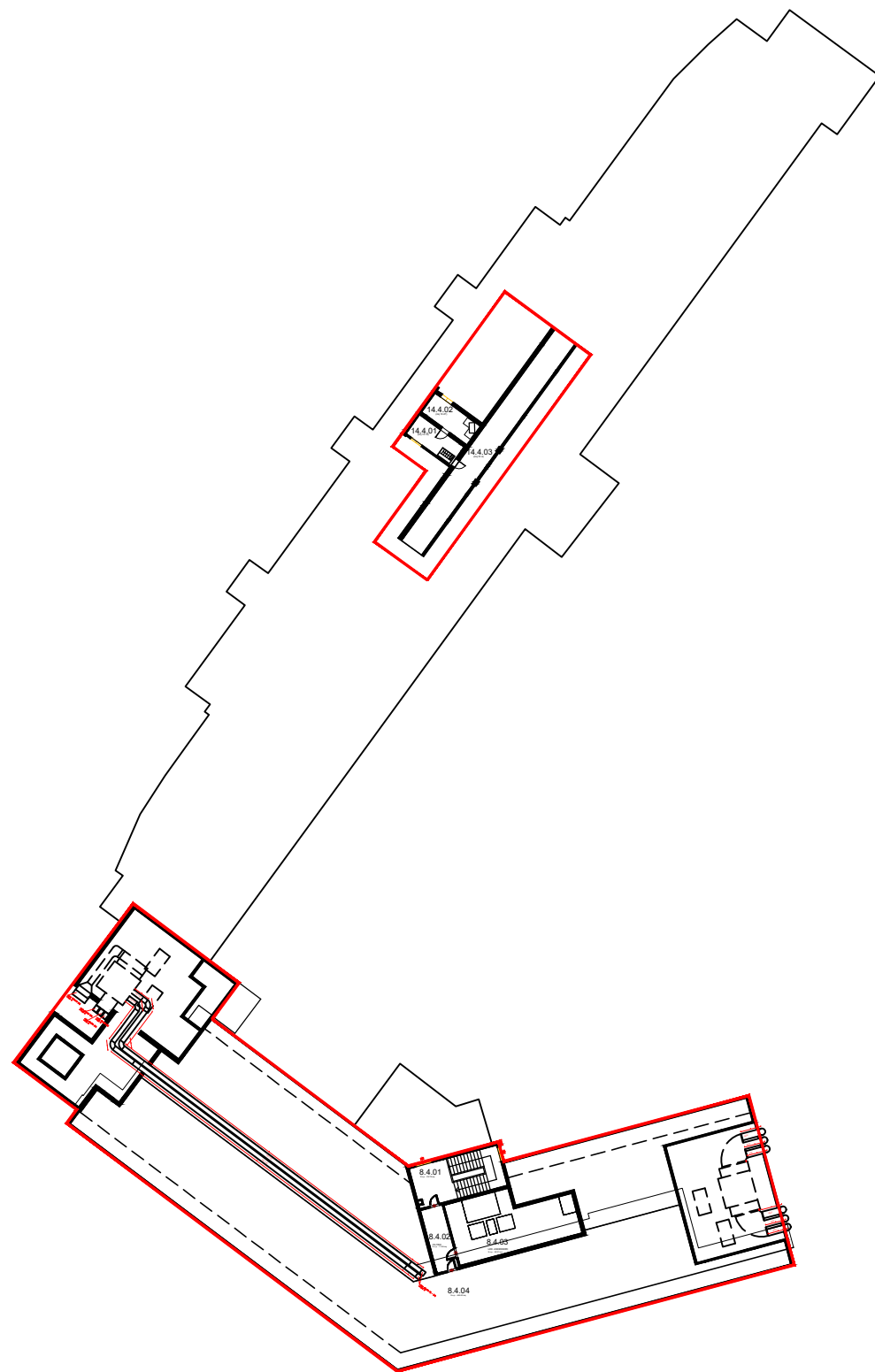


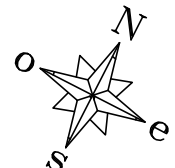
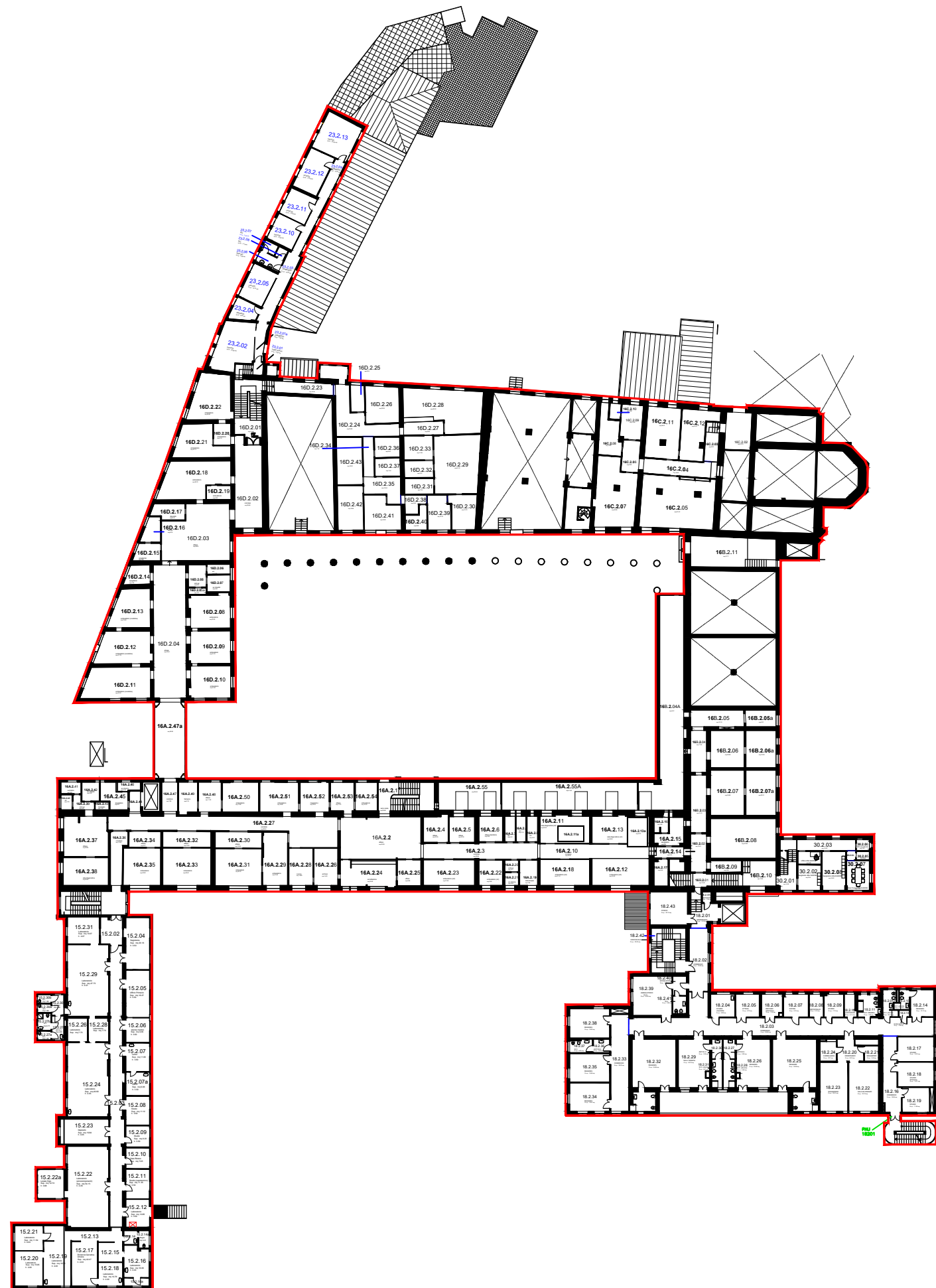


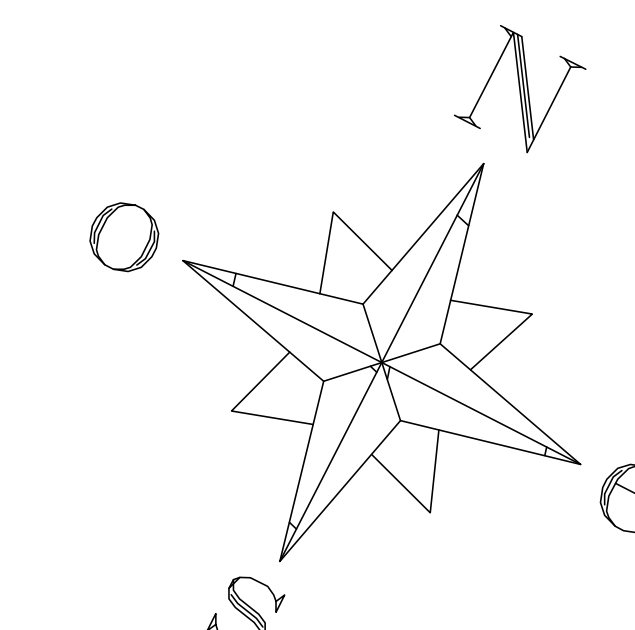


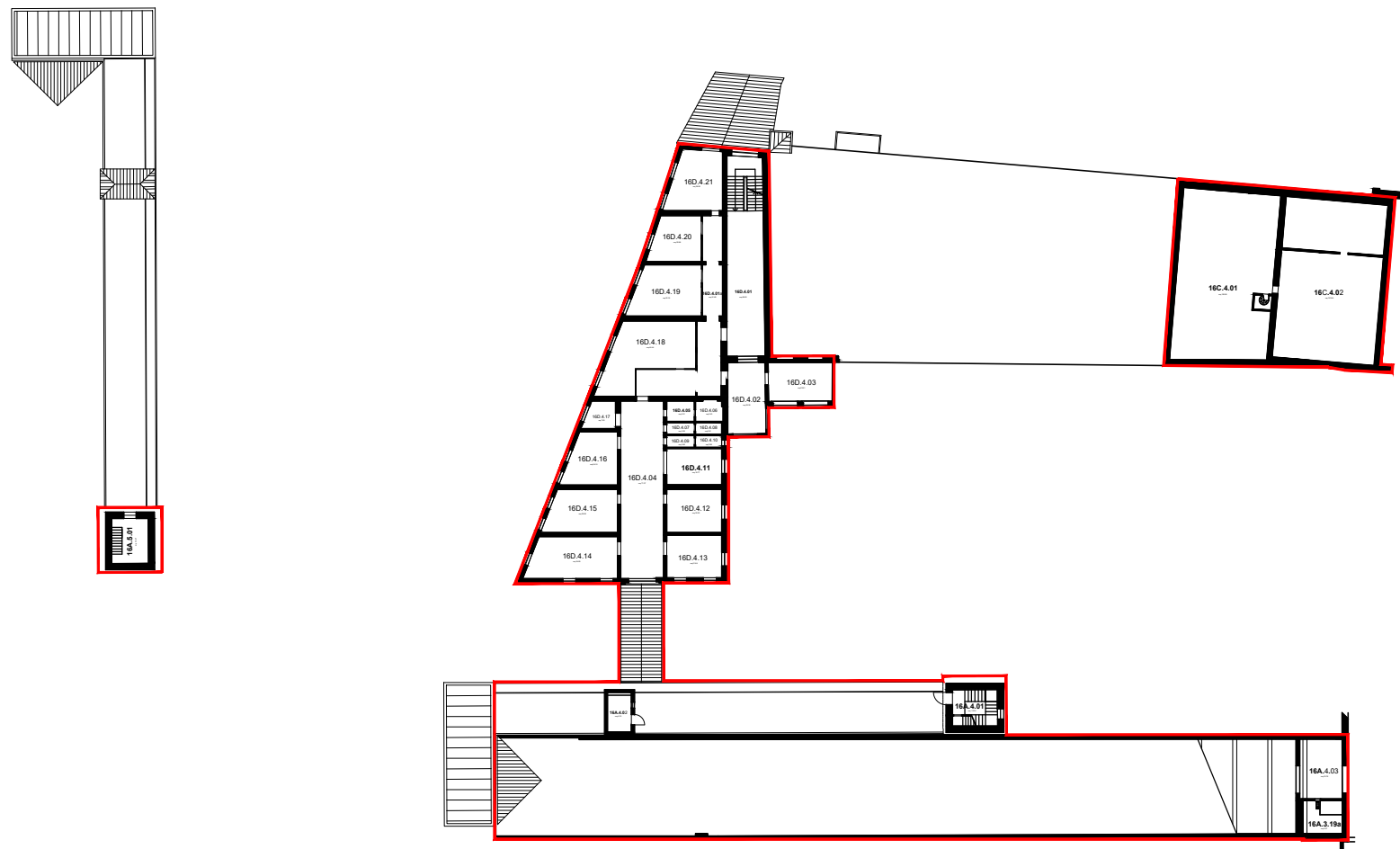


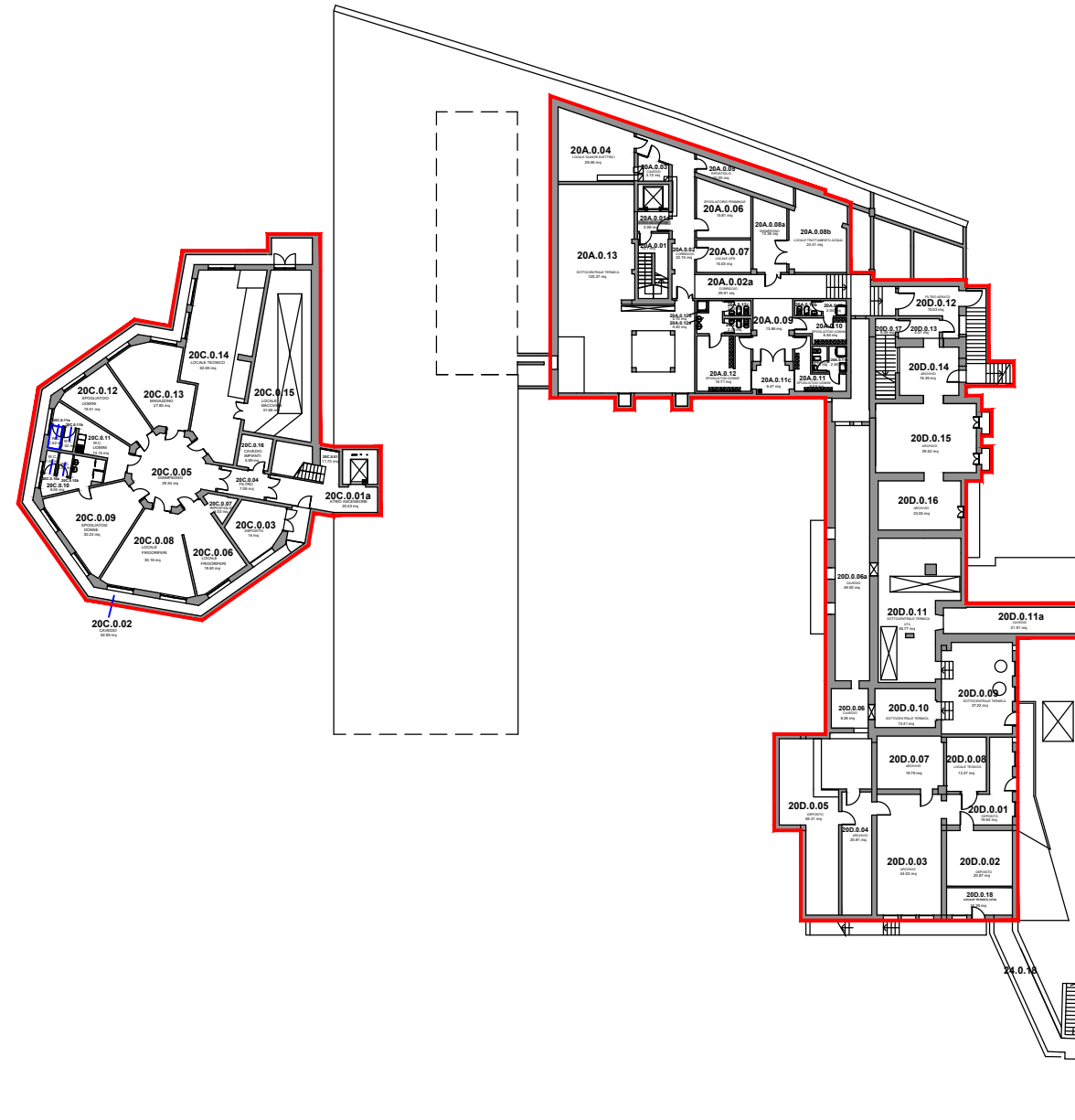




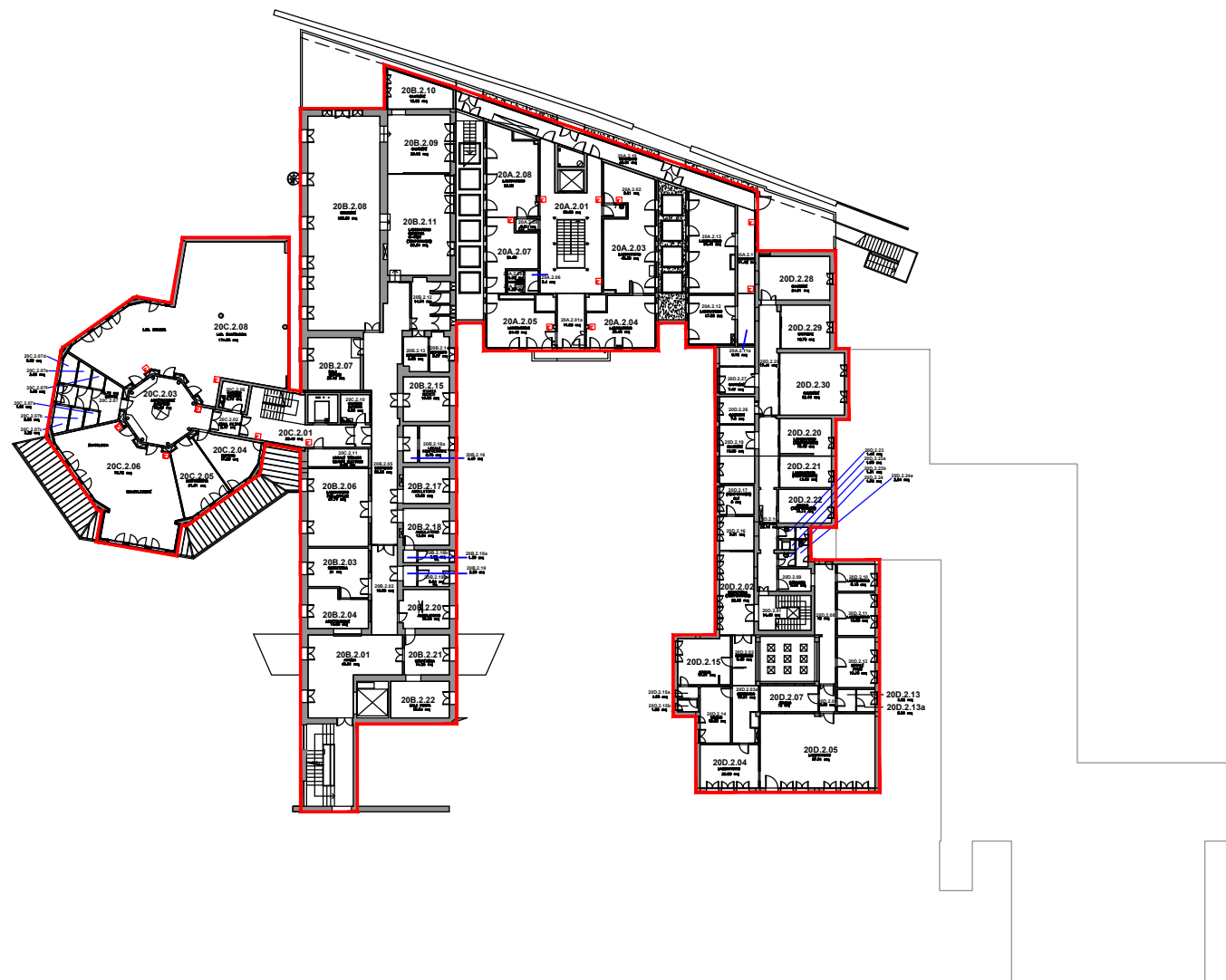


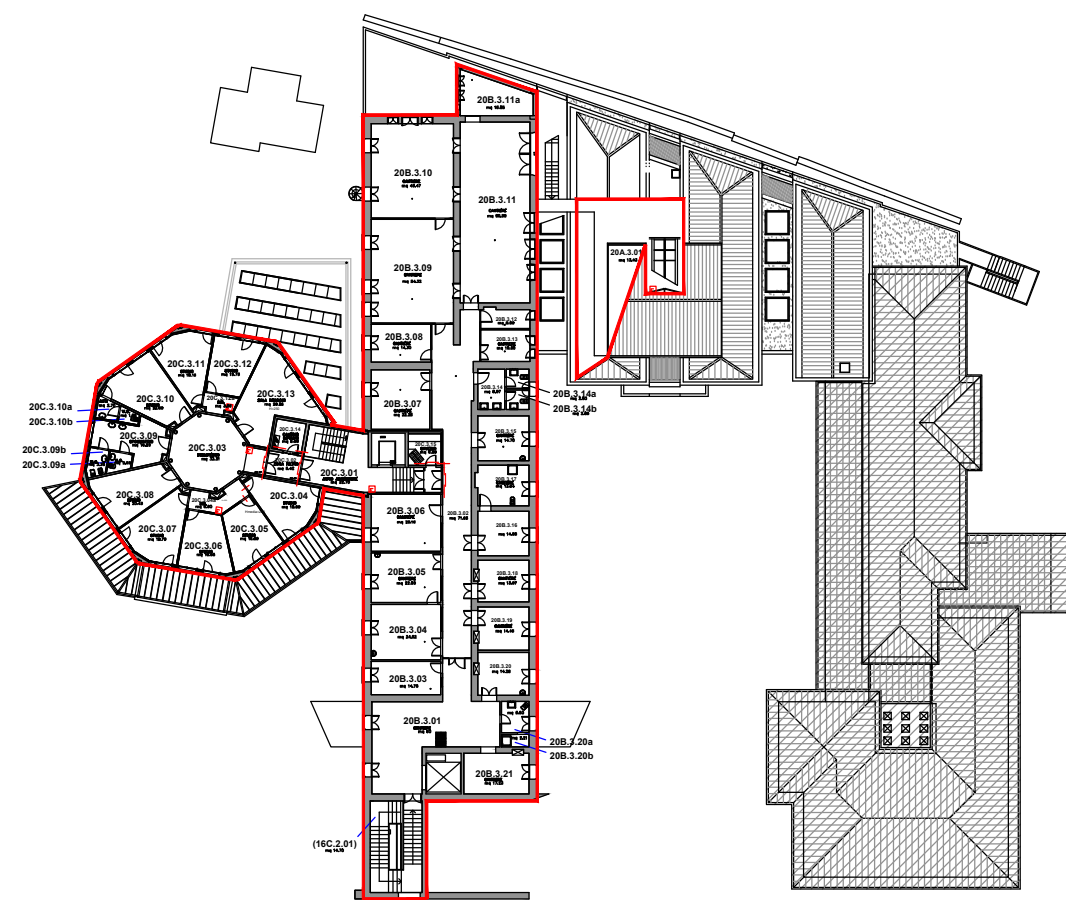




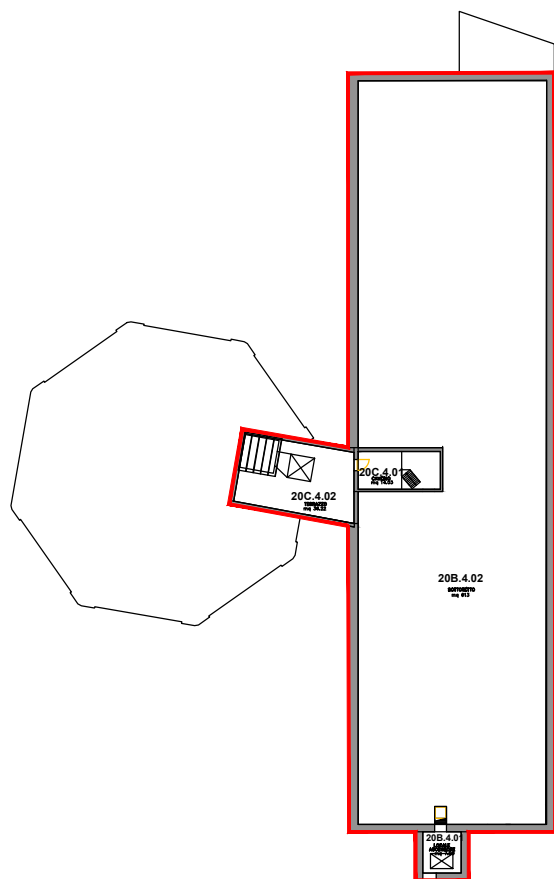








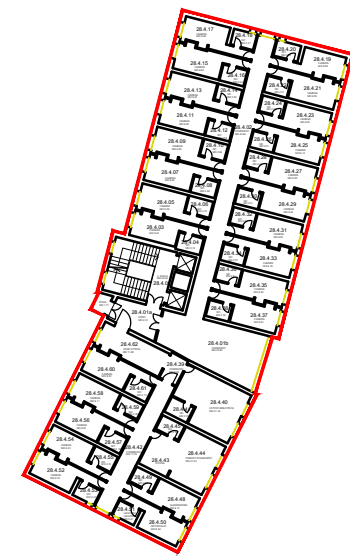
LIVELLO 3

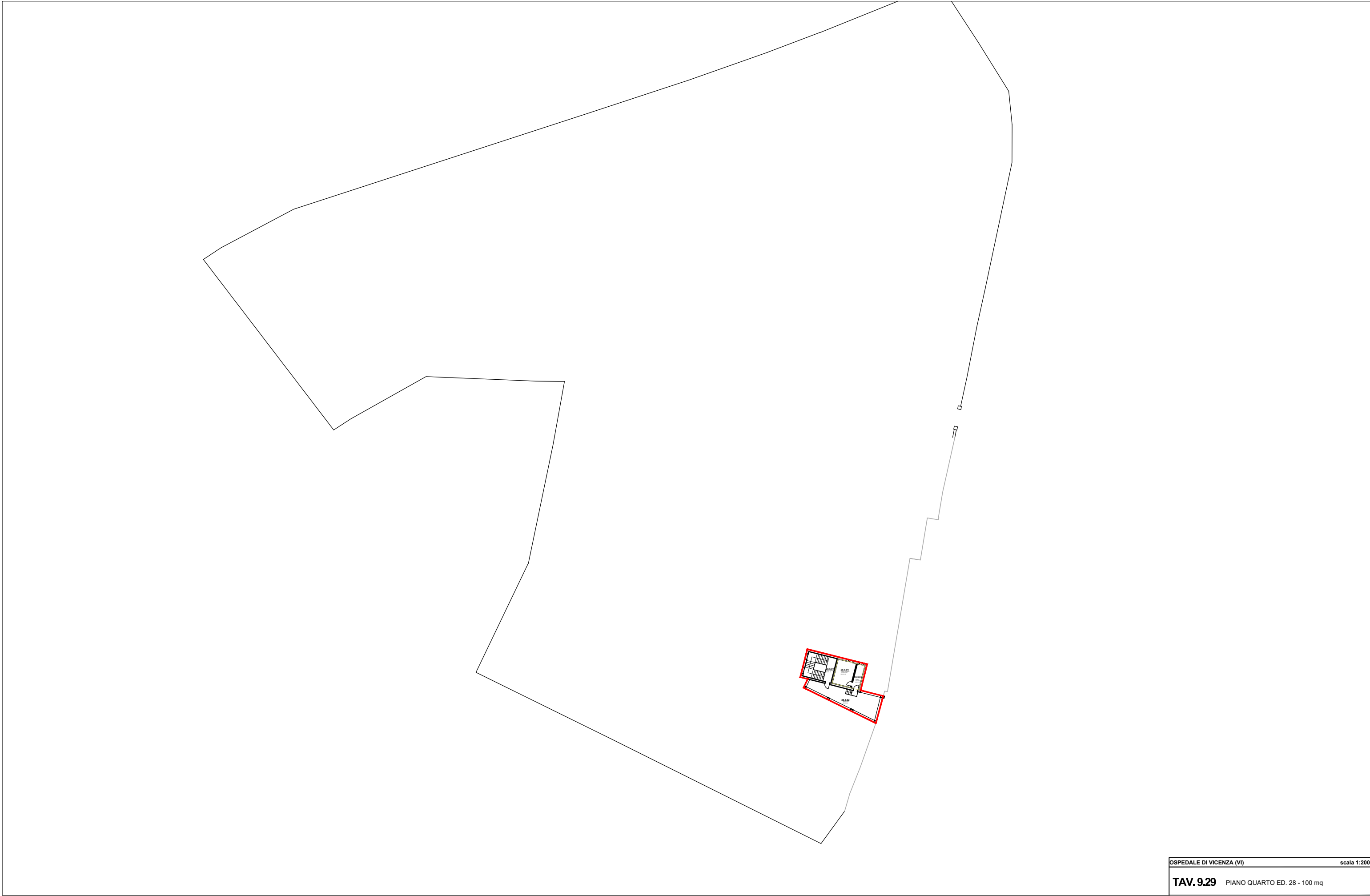




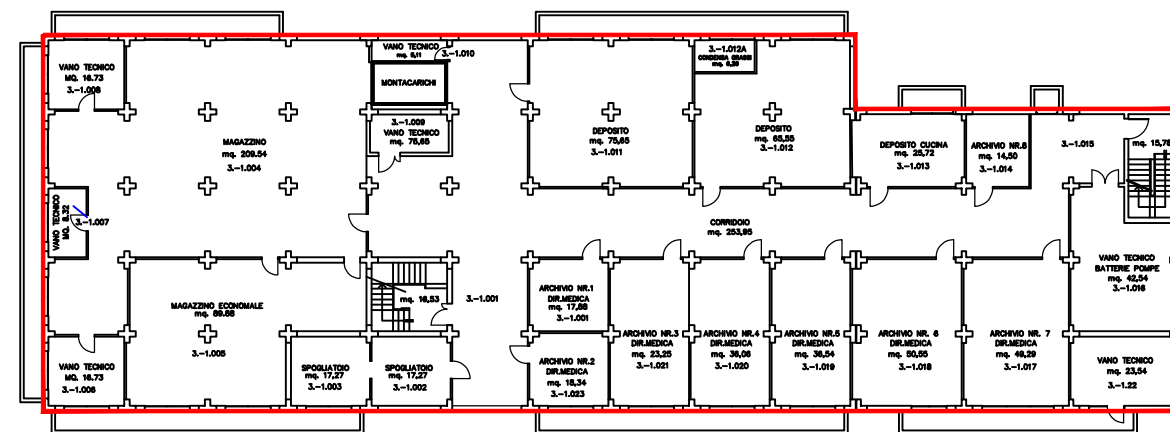


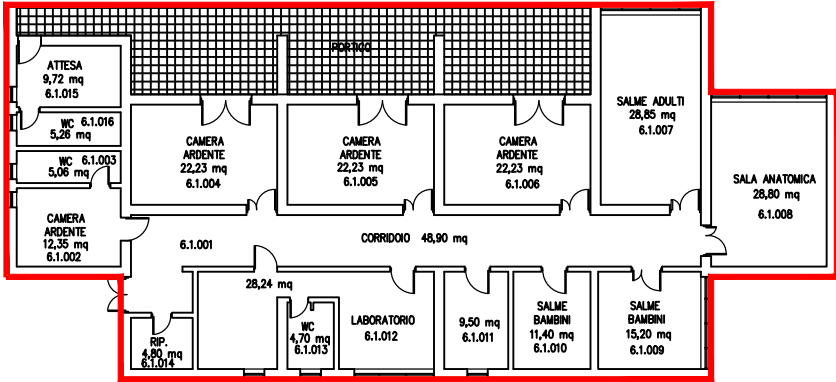


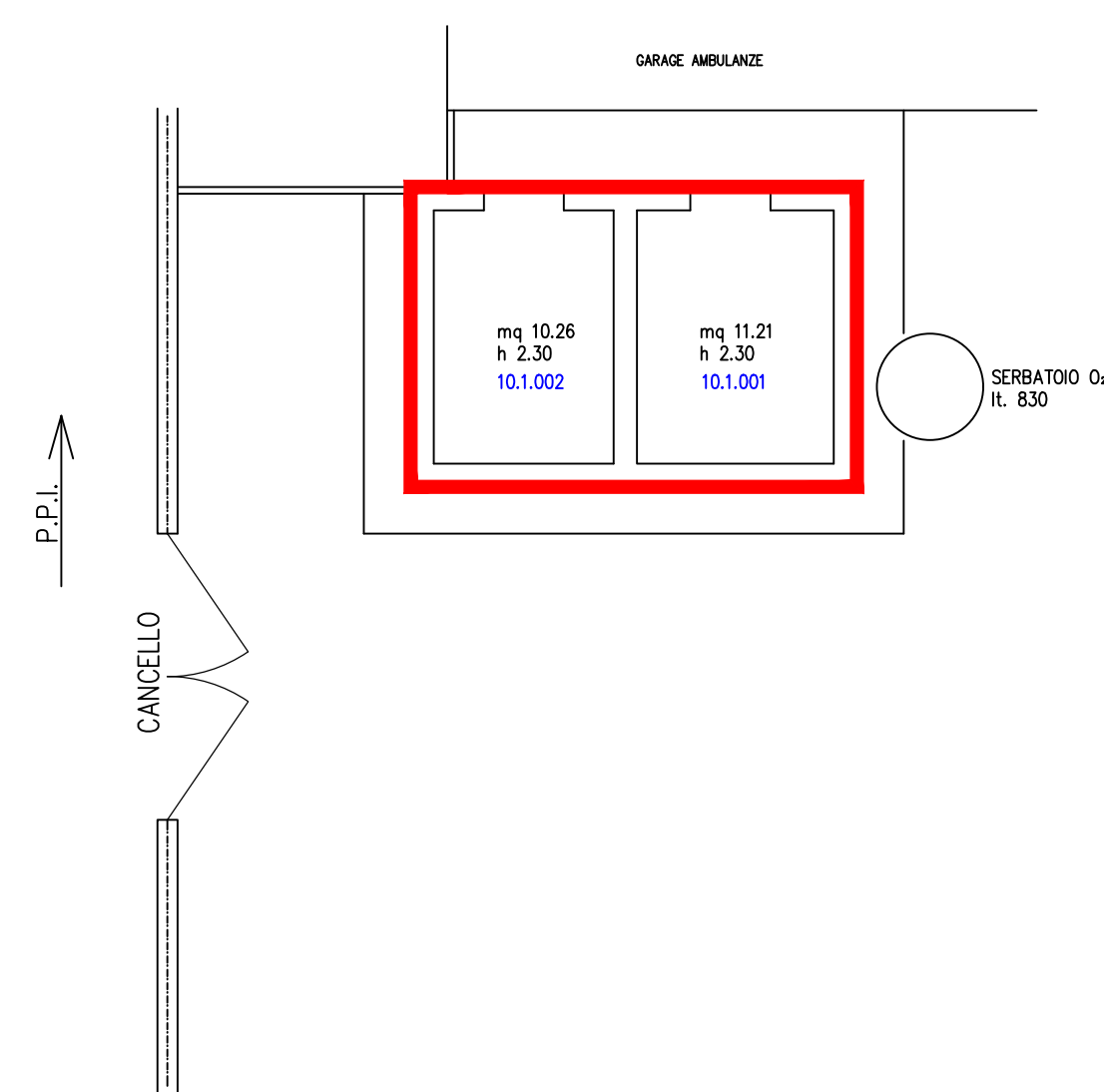




OSPEDALE DI LONIGO (VI)



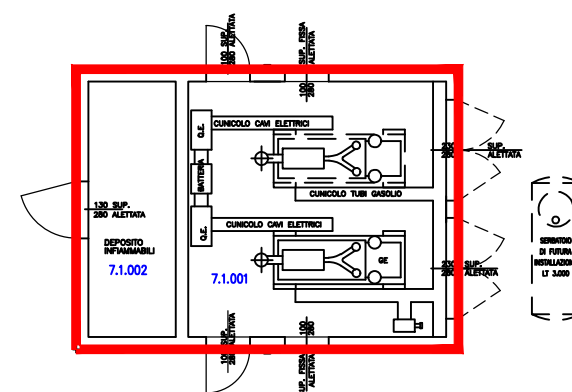




OSPEDALE DI LONIGO (VI)

scala 1:200

TAV. 3.1 PIANO TERRA (LOCALI TECNICI) - 30 mq



OSPEDALE DI LONIGO (VI)

scala 1:200

TAV. 3.1 PIANO TERRA (LOCALI TECNICI) - 55 mq

